

MONTANA

2024-25

DIRECTORY

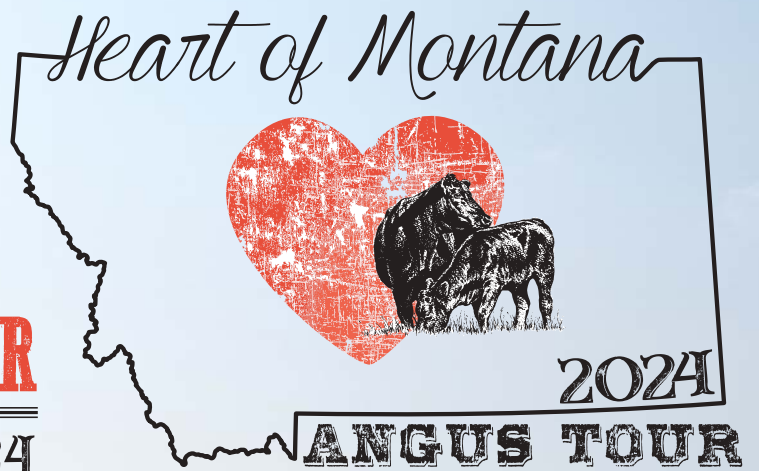
ANGUS

*Showcasing
Cattle & Producers from the
Heart of Central Montana*

MONTANA ANGUS TOUR

SEPTEMBER 17-19, 2024

LEWISTOWN, MONTANA



PRSRRT MRKT
US Postage Paid
Ballyhoo Printing
59457

Montana Angus News
PO Box 25
Whitlash, MT 59545

A Lasting Legacy Elite Female Sale

SATURDAY | OCTOBER 19, 2024 | 11 AM MDT

BILLINGS LIVESTOCK COMMISSION | BILLINGS, MONTANA



Selling
30 Cows
30 Bred Heifers
30 Heifer Calves

Basin Camilla 9044 19461584



Sired by Basin Rainmaker 4404. The Dam of BASIN TRUE GRIT 1021 and BASIN KASH DEPOSIT 2138. This HERD BULL producing donor is a beautiful and functional cow.

Selling one-half embryo interest in this MATERNAL POWERHOUSE. She sells with an embryo heifer calf sired by Basin Keystone 2021 that is one of the top prospects from his exciting first calf crop.

Basin Joy 8471 19127184



Sired by Basin Paycheck 5249. The Dam of BASIN BLACK LABEL 3245. With six sons sold at auction for an average of \$11,500, this powerful donor is just starting to make her mark in the Basin Program. A POWERFUL donor with tremendous DEPTH and DIMENSION while still maintaining a FEMININE look.

Selling full interest, along with her embryo heifer calf sired by Virginia Tech Statesman and a line bred Basin Joy bred heifer sired by Basin Jameson 1076.

www.BasinAngus.com

Doug Stevenson (406) 350-0350

Nicole Stevenson (406) 350-2222

Shane Whiteman (406) 366-0688

Annual Bull Sale March 21, 2025

GREEN MOUNTAIN ANGUS RANCH

RYEGATE, MONTANA

The Cattlemen's Choice

Monday Nov. 11, 2024

New Date!

New Sale Location!

At the Public Auction Yards, Billings, MT
Lunch 11:00 a.m. | Sale 1:00 p.m.

Fall Production Sale

Offering: 220 Yearling Angus
& 25 18-month-old bulls
125 Commercial Bred Heifers
Sync'd & AI'd to MRA Advocate

SALE BROADCASTED ON:



S Wrangler 830

Reg: *19198304

BW: -.3 | WW: 66 | YW: 121 | M: 27 | \$B: 143

Sires Include:

- S Wrangler 830
- Tehama Patriarch F028
- S Armstrong 1149
- Baldrige Flagstone F411
- S Architect 9501
- Sitz Virtue 11710
- M R A Advocate 9035
- Marcys Scale Crusher 29
- Schaack Load Up 0256



Tehama Patriarch F028

Reg: *18981191

BW: -1.7 | WW: 69 | YW: 133 | M: 30 | \$B: 170

- Volume Discounts
- First Season Guarantee
- Free Delivery
- Free Wintering

TIM & KRIS TODD - 406-220-1975 (C)
www.GreenMountainAngus.com • gmar@midrivers.com

REMINISCE INFLUENCE BRED HEIFER SALE

TUESDAY, NOVEMBER 12, 2024

Reminisce Angus Sale Barn, Dillon, MT

500 HEAD OF HEIFERS!

- Pelvic measured prior to breeding
- **350 head** AI'd to the American outcross standout, **RM McLendon 9599**
- AI'd to start calving February 2nd



AAA #19793942 // DOB: 06/01/2019

RM McLENDON 9599

is an American outcross, true calving ease standout. Over 3,000 heifers have been AI'd to McLendon as of 2024 with no reports of any calving issues. These calves come easy and hit the ground with amazing vigor! He is a double-bred calving-ease sire that will splash new blood into nearly every herd in America. His sire Dunlouse Cortachy Boy is a true calving-ease, native Aberdeen Angus sire from Scotland. Nowhere in America will you find this pedigree and consistent calving ease. His maternal grand sire RM 2 Trend 3105 has been bred successfully to thousands of heifers in many herds with no difficulty. Both bulls in this pedigree produce calves with a lot of vigor at birth. Both sires are high marbling bulls as well.

1ST CUT, 1 IRON

All heifers cleaned up with Reminisce Angus Cortachy Boy sons. Full Vaccination Program: Preg Guard 10, Vision 8, Virashield VL5, Valbaezon, Cleanup Brucellosis Free, Bangs vaccinated and bled for Brucellosis, BVD PI3 FREE, Preg checked twice
All calves will be eligible for the Reminisce Angus Beef Program.

BRYAN & MARCIA MUSSARD

6101 Sweetwater Rd, Dillon, MT
406-925-1416 • 406-683-6363
bryanmussard406@gmail.com



CHALLIS CREEK CATTLE CO.

Steve Bauchman
PO Box 10, Challis, ID
sbauchman@challisrcr.com



TIMBER LINE RANCH

Selling Bulls & Females

04.18.2025

JAKE CALLANTINE
(406) 581-4764
TIMBERLINEANGUS.COM



RFM
RON FRYE MARKETING
406.600.7514



Ballyhoo

PRINTING & DESIGN

How Do You Ballyhoo?



- Dedication
- Experience
- Consistency
- Reputation
- Longevity
- Creativity

Custom Design • Full Service Printing • Mailing
Bull Sale Catalogs Are Our Specialty. Still.

We've helped sell a lot of bulls in our twenty plus years!



- Support
- Quality
- Ease
- Service

Custom everything!



Anything on paper and beyond!
 books, invoices, invitations . . .
PLUS photo prints and gifts, wall art,
 swag, signage, and SO much more!



- Respect
- Knowledge
- Empowerment
- Understanding

Create
 with us!

Generations!
 Gerri's son, Parker
 in 2000 and his
 son, Wes in 2024



187 W Frontage Road
 Lewistown, MT 59457

406 • 538 • 7988



BallyhooPrinting.com

ballyhoo \bal' é-hōō\ n. Clamorous and vigorous attempt to win customers or advance any cause; blatant advertising or publicity.



Bob Sitz & Joe Jones

Families doing business with each other across multiple generations is rare in the business world. I think the reason the Sitz family has so many 30- to 50-year customers is that they are buying a proven product from a family with integrity that values their business enough to provide superior customer service. —Joe Jones

SITZ *Angus*

A CENTENNIAL HERD OF EXCELLENCE EST. 1923

It's not what the deal is...**It's who the deal is with.**

The Sitz family has been great to deal with. My father started buying Sitz bulls in the early 1970s and we have continued buying bulls from the Sitz family for more than six decades — Dee Johnson, Dryfork Land & Livestock



Dee Johnson



SITZ Centennial 11702

AAA# 20306671

Owned with Dryfork Land & Livestock, Edgerton, WY



Sitz ANGUS, 2023

59th Annual **Fall Bull Sale**
December 5, 2024

Harrison, MT

450 PAP-Tested Coming 2-Year Old Bulls
350 SITZ Bred Heifers | 150 Commercial Cows

23rd Annual **Spring Bull Sale**
March 12, 2025

Dillon, MT

300 Yearling PAP-Tested Angus Bulls
300 Open Commercial Replacement Females

SitzAngus.com



Jim Sitz
(406) 683-5277
SitzAngus@gmail.com

Bob Sitz
(406) 581-6448
SitzAngusRanch@gmail.com

Joe Jones
(208) 670-2364
JoeJones@SitzAngus.com

MONTANA 2024-25 DIRECTOR ANGUS

We look forward to seeing all the cattle on the 2024 Montana Angus Tour in Lewistown, MT, September 17-19, 2024!



TABLE OF CONTENTS

Message from the Executive Administrator	6
President's Message.	10
2024 Montana Angus Tour	26-36
Breeder's Directory Listings	38-76
News Briefs and Reference	
Advertising Index	86
Commercial Private Treaty Listings	84
Event Calendar	16-18, 22
Montana Angus Assoc Board of Directors	76
Montana Regional Associations Listing	84
Seedstock Private Treaty Listings	82-83

Welcome to this year's edition of the Montana Angus Breeders Directory. As the Executive Administrator, it is my pleasure to present to you this comprehensive guide to the finest Angus breeders in our state. Our aim is to connect breeders, buyers, and enthusiasts, fostering a community dedicated to the highest standards of Angus cattle breeding.

This directory is more than just a list; it's a testament to the hard work and dedication of our breeders. Each entry represents a commitment to excellence in cattle breeding, ensuring that the Angus breed continues to thrive and improve. Whether you are looking to purchase your next herd bull, seeking genetic advancements, or simply wanting to learn more about the breeders in our state, this directory serves as your go-to resource.

We are excited to announce that this Directory includes detailed information about the 2024 Montana Angus Tour, which will be hosted out of Lewistown, MT, from September 17-19, 2024. This tour is a fantastic opportunity to meet fellow breeders, exchange ideas, and witness the exceptional Angus operations in Montana. Included are bios of the tour hosts, providing insight into their operations and contributions to the Angus community.

We are proud to support the Angus community and to be a part of an industry that values quality, integrity, and innovation. I encourage you to reach out to these breeders, visit their operations, and see firsthand the passion and expertise that goes into raising top-quality Angus cattle.

Thank you for your continued support, and we look forward to serving you in the years to come.

Happy Trails,

Jesse Thompson
Montana Angus News
montanaangusnews@mtangus.org

The Montana Angus News is the official publication of the Montana Angus Association and is available to anyone interested in Montana's Angus cattle. However, advertising is restricted to those raising Angus cattle in the state, those consigning Angus bulls to Midland Bull Test or people servicing cattlemen with their business located in Montana.

Since the magazine is not subject to subscriptions, the only feasible way it can be mailed is at bulk rate; therefore, advertising for events scheduled within 18 days of publication will be accepted only at the advertisers risk, and this publication will assume no financial responsibility for distribution on its entire circulation prior to that time.

Finally, the information contained is from sources deemed reliable, but is not guaranteed.

For details on subscriptions and advertising please contact:

Jesse Thompson
406.450.3429
PO Box 25 • Whitlash, MT 59545
montanaangusnews@mtangus.org



Printing:
Ballyhoo Printing • Lewistown, MT
www.BallyhooPrinting.com

GDAR



Featuring sons by

All In	Justified
Justo	Testament
Ace	Outside
Duke	True North
Clipper	Bardolier

Build Your Legacy

Building better cows is a big job.
Let's get started.



Let's Build a Legacy!
www.gdar-angus.com

Gartner ~ Denowh

ANGUS RANCH

Mick Denowh 406-489-0172
Paul Denowh 406-480-2761
Chad Denowh 406-489-1762
www.gdar-angus.com

58th Annual Production Sale

March 27, 2025

250 Yearling Bulls

250 Commercial Heifers

1:00 MDT at the ranch • Sidney, MT

FOCUSED ON THE FEMALE

AAA 19464109 JUSTIFIED 914



AAA 19436794 JUMBO



AAA 20258264 RANAHAN



AAA 19534719 DREAMER



AAA 19343216 DUKE



AAA 19198304 WRANGLER



AAA 20845840 HONDO



AAA 20515570 BRIDGER



AAA 17666102 CAPITALIST 316



SIRES DESIGNED TO KEEP YOU IN THE COW BUSINESS!



BEEF-360

www.BEEF-360.com

KEENAN SWITZER 660-734-0510
 JERRY TERRILL 214-726-2759

FOR BEEF-360 GENETICS - CONTACT US OR ANY OF OUR INDEPENDENT REPS OR DISTRIBUTORS.

WE'RE INDEPENDENT - JUST LIKE YOU

JC HEIKEN ANGUS & SONS

18TH ANNUAL PRODUCTION SALE

TUESDAY, FEBRUARY 25, 2025 1:00PM

MILES CITY LIVESTOCK COMMISSION MILES CITY, MONTANA

RFM

RON FRYE MARKETING
406.600.7514



**Call for more
information:**

John (406)855-7839

Brian (406) 861-3151

Ben (406)860-7331

Joe (406)861-1020

**Or come visit the
ranch anytime!**

Incentive Sons continue to top sales in Montana, Nebraska and the Dakotas, while his daughters catch eyes in any herd. Impressive foot scores, combined with a solid EPD lineup, Incentive genetics touch the essential bases for beef production in nearly all environments. Put Incentive genetics to work in your herd today

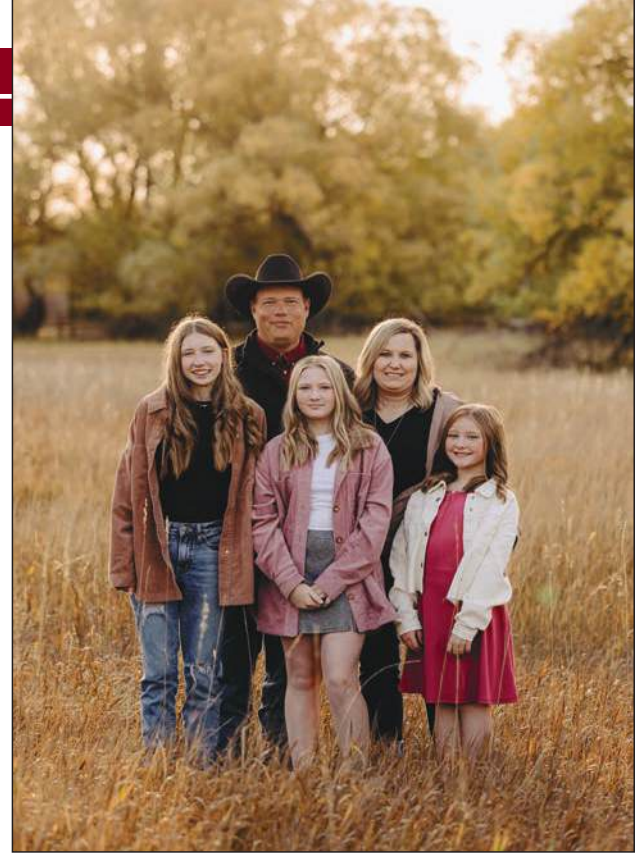
Check out our website or follow us on Facebook for the most up-to-date information
www.JCHeikenAngusAndSons.com or facebook.com/JCHeikenAngusAndSons

PRESIDENT'S MESSAGE

It's time for me to pass the torch! My sentence as President has been a great experience, I learned a lot and got to know some great people along the way. The MT Angus board is stronger than ever. Each and every person currently on the board takes their job very seriously and any issue that comes up is fully vetted before any decision is made. I would like to take this opportunity to thank everyone that I served with for putting in all the time and effort the job required.

I would also like to thank Jesse for doing such a great job as our Executive Administrator and as the editor of the Montana Angus News. It is no easy job keeping a bunch of busy Angus breeders from around our state on task and organized. Plus, she puts together a magazine that is the envy of every state breed association. Jesse is a huge asset to MT Angus and I would like to thank her for all of her hard work.

This year's tour is really shaping up to be an outstanding experience. Make sure to get registered, it will be well worth it. Don't forget to attend the banquet and keep in mind that the priority page auction will be held during the banquet and it is the main fundraiser for the Montana Angus Association. I hope to see everyone on the MT Angus Tour!



-Chad Denowh, Montana Angus Association President

YOUR FORAGE +  +  = **COMPLETE BALANCED RATION**

FLAX & MOS STANDARD *NO MOLASSES NO UREA*

GET UP TO 25% MORE digestible energy, protein, and other nutrients from your forage with SweetPro.

- Protein
- Energy
- Minerals
- Vitamins
- ProBiotin
- a powerful digestive aide chelated & crystalloid*

Breeding High Mag Flax Weaning MOS Stress

IT'S IN THE PROGRAM

AVAILABLE WITH NATURAL EXTRACTS

Stress?
Clove, Cinnamon,
& Chili Pepper Extracts



Insects?
Garlic Extract



866.601.6646




16th Annual BULL SALE

2023 Sale Highlights
Bulls like these sell!



Offering 110
18-month-old bulls

December

11th 2024

1 PM

at the ranch south of Chinook, MT

SHIPWHEEL *TADASHII* 2679



SHIPWHEEL *RAINMAKER* 2554



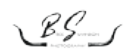
SHIPWHEEL *REAL DEAL* 2610



Swanson Family

Klint, Lori, Austin, & Bree
(406) 357-2492
lori@shipwheelcattle.com

Check us out on social media and scan the QR code to visit our website!



AM I FULL OF CRAP?

Dr. Pereira


Azores
VETERINARY PRACTICE

Mortality has gone way down. The use of First Defense products has proven to be a major weapon in the fight against neonatal scours on our dairy herds. Calves in our care get protected as soon as they hit the ground. If it was more complicated than that, I wouldn't be standing here.

Sergio B. Pereira, DVM
Azores Veterinary Practice

Learn more at
FirstDefenseCalfHealth.com

© 2021 Immucell Corporation. All Rights Reserved.



**THE BEST VACCINE FOR SCOURS,
ISN'T A VACCINE.**





Thiessen's

REGENCY ACRES

Select your bulls from a reliable program backed by 67 years of unswerving selection for economic and labor-saving traits that include udder soundness, structural soundness, calving ease, vigor at birth, pasture and feedlot performance and disposition.



RA Union 2123 20437998

CED	BW	WW	YW	SC	MILK	DOC	MARB	REA	\$B
+9	+9	+66	+120	+72	+31	+22	+37	+89	+135



Vermilion Riverside 20352476

CED	BW	WW	YW	SC	MILK	DOC	MARB	REA	\$B
+6	+7	+97	+165	+77	+19	+24	+26	+91	+159



S Revolution 20470908

CED	BW	WW	YW	SC	MILK	DOC	MARB	REA	\$B
+7	+0.5	+67	+111	+74	+25	+33	+78	+71	+171



HA Believe K143 20501059

CED	BW	WW	YW	SC	MILK	DOC	MARB	REA	\$B
+0	+3.4	+85	+149	+1.07	+26	+23	+85	+57	+167



40th Annual Production Sale

FRIDAY, APRIL 11, 2025

Sidney Livestock Market Center • Sidney, MT • 1 p.m. MDT

Selling **85 Yearling Angus Bulls**
25 Purebred Replacement Heifers

Catalog and Videos Online: regencyacres.com

Russ & Jill Thiessen
(406) 774-3702 • (406) 480-5988 cell
Tyler Thiessen • (406) 480-1284
raa@midrivers.com • www.regencyacres.com
P.O. Box 272 • Lambert, MT 59243



Our Mission:

To propagate genetics that will return the most dollars per acre for our customers.

DVAuction
Broadcasting Real-Time Auctions

Focused on the future ... backed by 67 years of dedication.

Jacobs Livestock Sales Inc.



Proud to be working with Montana's Top Angus Breeder's!

September 2024

- 16 Northern Livestock Video - Billings, MT
- 30 Green Mountain Angus Ranch Dispersion - Billings, MT

October 2024

- 1 Green Mountain Angus Ranch Dispersion - Billings, MT
- 8 Coleman Angus Ranch - Charlo, MT
- 9 Montana Ranch - Big Fork, MT
- 18 NILE Angus Female Sale - Billings, MT
- 19 Basin Angus Ranch - Billings, MT

November 2024

- 9 Montana Ranch Bull Sale - Big Fork, MT
- 15 Green Mountain Angus Bull Sale - Billings, MT
- 12 Reminisce Angus Ranch - Dillon, MT
- 30 Vermilion Ranch - Billings, MT

Roger Jacobs

is Montana's busiest, most trusted and experienced auctioneer with 40 plus years of auction experience and is a licensed real estate broker with 39 years of real estate sales experience.

Roger & Sandy Jacobs

7445 Highway 312 East • Billings, MT 59105 • Phone: (406) 698-7686
roger@premierlandcompany.com • www.JacobsLivestock.com

December 2024

- 2 Stevenson's Diamond Dot - Hobson, MT
- 3 Stevenson Angus Ranch - Hobson, MT
- 5 Sitz Angus Ranch - Harrison, MT

February 2025

- 5 Beggar's Diamond V - Wibaux, MT
- 22 Never Sweat Ranch - Missoula, MT
- 25 Connelly Angus Ranch - Valier, MT
- 26 Stortz Angus Ranch - Glendive, MT
- 27 VanDyke Angus Ranch - Manhattan, MT

March 2025

- 1 Kim Angus Ranch - Three Forks, MT
- 2 Stevenson Angus - White Sulphur Springs, MT
- 4 Apex Angus Ranch - Valier, MT
- 5 Ox Bow Ranch - Wolf Creek, MT
- 7 Reminisce Angus Ranch - Dillon, MT
- 24 Larsen Angus Ranch - Forsyth, MT
- 27 Gartner-Denowh Angus Ranch - Sidney, MT
- 28 Vermilion Ranch - Billings, MT

April 2025

- 2 Nissen Angus Ranch - Chinook, MT
- 3 Arntzen Angus Ranch - Hilger, MT
- 12 Math Farms Angus - Glasgow, MT
- 23 Miske Angus Ranch - Glendive, MT

Call today to book your production sale or visit about listing your farm or ranch at Premier Land Company.

20th Annual Sale

180 Bulls – 800 Females Sell

DECEMBER 19, 2024

Western Livestock Auction
Great Falls, Montana



Raven Unite L47
AAA 20779439

 **Bobcat**
ANGUS
bobcatangus@northerntel.net

Bryan Ratzburg:
(406) 937-5858
Cell: (406) 788-3272

Ernie Ratzburg:
Cell: (406) 788-3244

bobcatangus.com

September 2024

- 17 **MT Angus Association Annual Meeting** • Lewistown, MT
4pm • Fairgrounds • (406) 450-3429 • www.MTAngus.org
- 11-19 **Montana Angus Tour** • Lewistown, MT
Host: Central Montana Angus Association • (406) 366-0511
www.MTAngus.org/Montana-Angus-Tour.html
- 30-10/1 **Green Mountain Angus Complete Cow Herd Dispersion**
Billings, MT • (406) 568-2768 • www.GreenMountainAngus.com

October 2024

- 8 **Coleman Angus Ranch Female Sale** • Charlo, MT • 1pm
(406) 240-2751 • (406) 644-2697 • www.ColemanAngus.com
- 10 **Fish Creek Balck Angus Online Sale** • 2pm
- 18 **NILE Angus Select Female Sale** • Billings, MT
(406) 600-7514 • www.RonFryeMarketing.com
- 19 **A Lasting Legacy Elite Female Sale (Basin Angus)**
Billings Livestock Commission • Billings, MT • 11am
(406) 350-0350 • www.BasinAngus.com

November 2024

- 8 **Arntzen Angus Influence Commercial Female Sale**
Lewistown, MT • 1pm • (406) 350-4000 • (406) 350-1612
(406) 350-1728 • www.ArntzenAngus.com
- 11 **Green Mountain Angus Ranch Production Sale** • Billings, MT
1pm • (406) 568-2768 • www.GreenMountainAngus.com
- 12 **Reminisce Angus Commercial Female Sale** • Dillon, MT
(406) 925-1416 • www.RemAngus.com
- 12 **Skinner Ranch Seedstock Commercial Female Sale**
Ramsay, MT • 1pm • (406) 288-4001 • www.SkinnerRanch.com
- 18 **MT Angus Female Bonanza** • PAYS • Billings, MT
- 30 **Vermilion Angus Fall Bull & Female Sale** • PAYS • Billings, MT
11am • (406) 670-0078 • www.VermilionAngus.com

December 2024

- 2 **Stevenson's Diamond Dot Annual Production Sale**
Hobson, MT • 12pm • (406) 374-2250 • (406) 366-9023
www.StevensonsDiamondDot.com
- 3 **Stevenson Angus Annual Production Sale** • Hobson, MT
1pm • (406) 350-5443 • www.StevensonAngus.com
- 4 **McDonnell Angus Beef Country Genetics Bull Sale**
Midland Bull Test • Columbus, MT • 1pm • (406) 780-0176
(406) 623-0862 • www.McDonnellBeefCounty.com

- 5 **Sitz Angus Fall Bull & Female Sale** • Harrison, MT • 11am
(406) 685-3360 • www.SitzAngus.com
- 6 **KG Ranch Annual Production Sale** • Headwaters Livestock
Three Forks, MT • 12:00pm • (406) 285-3660 • www.KGRanch.com
- 7 **Currant Creek Angus Bull Sale** • Roundup, MT
(406) 323-1024 • www.CurrantCreekAngus.com
- 8-10 **Diamond D Angus Annual Bull Sale** • Valier, MT • 1pm
(800) 932-6487 • www.DiamondDAngus.com
- 9 **Indreland Angus Bull Sale** • Big Timber, MT/Online • 1pm
(406) 932-4232 • www.IndrelandRanch.com
- 9 **Hollow Top Angus Bull Sale** • Pony, MT
(406) 223-5078 • www.HollowTopAngus.com
- 11 **Armstrong Angus Ranch ONLINE Bull Sale ENDS**
(406) 224-0586 • www.ArmstrongAngusRanch.com
- 11 **Shipwheel Cattle Co. Annual Bull Sale** • Chinook, MT • 1pm
(406) 357-2492 • www.ShipwheelCattle.com
- 14 **Medicine Rocks Angus Complete Herd Dispersion**
(406) 775-6478 • www.MedicineRocksRanch.com
- 14 **Gaugler Angus Annual Production Sale** • Judith Gap, MT
1pm • (406) 350-9283 • www.GauglerAngus.com
- 16 **Hunt Creek Angus Bull Sale** • Miles City Livestock
Commission • Miles City, MT • 1pm • (406) 425-2006
- 19 **Bobcat Angus Annual Production Sale** • Western Livestock
Great Falls, MT • 12:30pm • (406) 788-3272 • (406) 788-3244
www.BobcatAngus.com

January 2025

- 6 **Diamond Ring Sale** • Billings, MT

February 2025

- 1 **Beartooth Angus Bull & Female Sale** • Billings, MT
(406) 794-1287 • www.BeartoothAngus.com
- 13 **Wittkopp Angus Annal Bull Sale** • Glasgow, MT • 1pm
(406) 974-3552 • (406) 228-9306 • www.WittkoppAngus.com
- 18 **Coleman Angus Ranch Bull Sale** • Location TBD • 1pm
(406) 833-0117 • (406) 644-2697 • (406) 240-2751
www.ColemanAngus.com
- 20 **VanDyke Angus Ranch Cattleman's Advantage Bull Sale**
Manhattan, MT • 12:30pm • (406) 580-1606 • www.VDAR.com
- 22 **Never Sweat Ranch Production Sale** • MT Livestock Auction
Ramsay, MT • 1pm • (406) 370-7623 • www.NeverSweatRanch.com
- 24 **Circle L Angus Bull Sale** • Dillon, MT • 1pm • (406) 491-7363
www.CircleLAngus.com

Vermilion Ranch

Circle L Unified

AAA *20592872

A A R Essential x Circle L Lady 100E

Circle L Unified is a very exciting young herd sire who was one of the most talked about bulls of the spring sale season. He is so right in so many ways. Phenotypically hard to fault – long bodied, lots of muscle, mass and structurally sound.

Unified ranks in the Top 1% for \$M and \$W, Top 5% for Milk, Top 10% for CED, DOC, Claw, PAP and \$C at +321. Multiple other traits also rank in the top 15-25% of the breed.

Unified is being used heavily in the Vermilion herd and will see extensive use across the breed. His service will be a real feature in our fall sale!
Owned with Circle L Angus.



CED	BE PD	WE PD	YE PD	\$C	HP	CEM	MILK	DOC	CLAW	ANGLE	PAP	CW	MARB	RE	\$M	\$W	SF	\$G	\$B	\$C															
+12	10%	+3	+80	15%	+127	+1.53	15%	+15.2	20%	+13	10%	+36	5%	+30	10%	+3.7	10%	+4.2	20%	-1.46	10%	+62	+86	+1.00	15%	+103	1%	+94	1%	+101	+67	25%	+168	+321	10%

please join us



Fall Performance Sale SATURDAY, NOVEMBER 30, 2024

Public Auction Yards, Billings, MT at 11:00 AM

180 TOTAL PERFORMANCE Fall Yearling Bulls

SIRE BY: Vermilion Bomber G017, Ellingson Three Rivers 0065, Connealy King Air, Vermilion Leo, V A R Conclusion 0234, S A V Glory Days, KG Powerball 9195.

150 Big, Stout Coming Two-Year-Olds

All sired by top Vermilion herd sires.

Bulls are genomic measured with **ANGUS** and PAP tested at 6,200'.

75 Registered Bred Heifers

Bred to Circle L Unified.

110 Head Registered Cow Dispersion

All 2017 born Registered Angus Cows from the Vermilion Ranch.

110 Head Commercial Cow Dispersion

All 2017 born Commercial Angus Cows from the Diamond Ring Ranch.

1,500 Fancy Bred Commercial Angus Heifers

All One Iron - Strictly Replacements - Top Northern Genetics Bred to Circle L Unified and Vermilion Leo.

Spring Performance Sale MARCH 27-28, 2025

500 TOTAL PERFORMANCE 2024 Spring Yearling Bulls

30 Registered 2023 Fall Open Heifers

4th Annual Online Embryo Sale

3,000 Fancy Open Commercial Angus Heifers



Follow Us

Vermilion Ranch

Pat Goggins Family

Bob Cook - Records & Sales
Cell: 406-670-0078

Jeff Mosher - Vermilion North
Brandon Mosher - Pryor Creek

Jake Kading - Herdsman
Cell: 406-672-5844

Bill Shaules - South Pryor
Will Ecord - Diamond Ring

PO Box 30758

Billings, MT 59107

Email: bcook@cattleplus.com
www.vermilionranch.com



Sale broadcast and videos available online through Northern Livestock Video Auction
www.northernlivestockvideo.com

25 **JC Heiken & Sons Angus Annual Production Sale** • Miles City Livestock • Miles City, MT • 1pm • (406) 855-7839
www.JCHeikenAngusAndSons.com

28 **Skinner Ranch Seedstock Annual Production Sale** • Hall, MT
1pm • (406) 581-1852 • (406) 581-6224 • www.SkinnerRanch.com

March 2025

1 **Kimm Angus 'Focus on the Factory' Bull Sale**
Three Forks, MT • 1pm • (406) 209-2653 • (406) 580-6172

1 **3C Cattle Annual Bull Sale** • Stevensville, MT
1pm • (406) 360-1875 • (406) 544-0043 • www.3CCattleLLC.com

2 **Stevenson Angus Spring Production Sale** •
White Sulphur Springs, MT • (406) 350-5443
www.StevensonAngus.com

3 **Clear Creek Angus Bull Sale** • Chinook, MT • 1pm
(406) 399-0403 • (406) 399-5335 • www.ClearCreekAngus.com

4 **Apex Angus Value Added Production Sale** • Valier, MT • 1pm
(406) 279-3350 • (406) 279-3548 • www.ApexAngus.com

5 **Ox Bow Ranch Annual Bull Sale** • Wolf Creek, MT • 1pm
(406) 235-4281 • www.OxBowRanchAngus.com

6 **Split Diamond Ranch Annual Bull Sale** • Dillon Livestock
Auction • Dillon, MT • 1pm • (406) 581-0612 • (406) 498-3005
www.SplitDiamond.com

6 **Anderson Cattle Company Bull Sale** • Fallon, MT • 1pm
(406) 945-2657 • (406) 945-4411

7 **Reminisce Angus Ranch Annual Bull Sale** • Dillon, MT • 1pm
(406) 925-1416 • (406) 683-6363 • www.RemAngus.com

8 **46th Annual Duncan Ranch Production Sale** • Joplin, MT
1pm • (406) 399-6300 • www.DuncanRanch.com

8 **Thousand Hills Angus Maternally Minded Bull Sale**
Headwaters Livestock • Three Forks, MT • 1pm
(406) 581-2078 • www.ThousandHillsAngus.com

10 **Pine Coulee Angus Annual Bull Sale** • Wagon Box Ranch
Hardin, MT • 12pm • (406) 855-2932
www.PineCoulee.com

11 **Veltkamp Angus Annual Bull Sale** • Manhattan, MT • 1pm
(406) 539-8564 • www.VeltkampAngus.com

13 **Sitz Angus Ranch Spring Bull Sale** • Dillon, MT • 12:30pm
(406) 683-5277 • www.SitzAngus.com

13 **Wheeler Mountain Angus Bull Sale** • Whitehall, MT
(406) 490-2734 • www.WheelerMountainRanch.com

14 **Green Mountain Angus Ranch Spring Sale** • PAYS
1pm • (406) 220-1915 • www.GreenMountainAngus.com

15 **South Montana Angus Association Bull Sale**
Ramsay, MT • 1pm • (406) 580-6973

15 **Gnerer Angus Bull Sale** • Olive, MT • 1pm • (406) 498-6113
www.GnererAngus.com

15 **Winding River Angus Private Treaty Opening Day**
Bridger, MT • 12pm • (406) 208-8643 • www.WindingRiverAngus.com

17 **Whistling Winds Angus Bull Sale** • Hingham, MT • 1pm
(406) 390-1471 • www.WhistlingWindsAngus.com

18 **Rocking L Genetics & Snowy Mountain Angus Sale**
Lewistown Livestock • Lewistown, MT • 1pm • (406) 350-1059

18 **Blevins Angus Ranch Bull Sale** • 5 Valleys Livestock, Missoula, MT
1pm • (406) 728-3052 • www.BlevinsAngusRanch.com

19 **Stevenson's Diamond Dot "Bulls & Beers Sale" Sale**
Hobson, MT • 4:30pm • (406) 366-9023
www.StevensonsDiamondDot.com

21 **Montana Performance Bull Coop w/ Basin Angus**
Midland Bull Test • Columbus, MT • 1pm • (406) 350-0350
www.BasinAngus.com

22 **Lund's B Bar Angus Annual Bull Sale** • Bull Palace • Baker, MT
1pm • (406) 978-3634 • (406) 978-3633
www.LundsBBarAngus.com

23 **Larsen Ranch Angus 51st Annual Bull Sale** • Forsyth, MT
1pm • (406) 351-1412 • (406) 351-9828 • www.LarsenRanch.com

24 **Cole Creek Angus Ranch Annual Bull Sale** • Midland Bull
Test • Columbus, MT • 1pm • (406) 839-7588 • (406) 694-7254
www.ColeCreekAngusRanch.com



Conventional Flush & IVF Services

Embryo Sexing • Donor Management

Donor Housing • Reverse Sort Semen

Pregnant Recips • Weaned Calves

Mark & Jeanne Reyher • (406) 580-3490

Austin Reyher • (406) 599-6836

7195 Thorpe Road, Belgrade, MT 59714

reyherembryonics@aol.com

PGC

PETERSON GRAIN & CATTLE

Registered Angus Seedstock

Ranch & Development Lot • 18211 Rd 325 N, Havre MT

Sale Facility • 32116 Rd 230 N, Havre MT



March 26, 2025

Ellingson Badlands • PGC Latitude 49 • Woodhill Comstock
PGC Authentic • PGC Forge • Sitz Stellar 726D • Myers Fair N Square
Tehama Tahoe B767 • Sitz Barricade 632F • Stevenson Easy Money

Andee 406.945.2717 • Kim 406.945.0544 • Casey 406.945.1355

PETERSONGRAINANDCATTLE.COM



Annual Bull Sale
Feb 1, 2025

1 pm @ Swift River Ranch
Billings, MT

Where

Power & Maternal **Meet**



EZAR Spurs Up 1125



Square B Atlantis 8060

Bulls Sired By

Square B Atlantis 8060

EZAR Spurs Up 1125

J Trademark 1037

Brumfield Trail Boss 057

Baldrige Judgement J127

Sitz Virtue 11710



Glenn Davis
219-776-7584



Cory Albin 406-794-1287
beartoothangus@gmail.com
www.beartoothangus.com

WHY SETTLE FOR LESS... Buy the Best!

Text for Your Sale Book! (406) 350-5443

SELLING 550 BULLS!

225 TWO YEAR OLD BULLS
Never Been Picked Over
Developed Specifically for These Offerings

325 YEARLING BULLS
Our Most Progressive Genetics,
Trait Leading Sire Groups

Where Cattlemen Buy Their Bulls . . .

Athletic, Age Advantaged Bulls, Cover More Country and Cover More Cows

Improve Substance



Improve Dimension



Improve Carcass



Improve Performance



Improve Maternal



Improve Phenotype



Improve Calving Ease



SELLING 400 FEMALES!

150 REGISTERED FEMALES
250 COMMERCIAL FEMALES

TUESDAY
DECEMBER 3 
2024

HOBSON

SUNDAY
MARCH 2
2025
WHITE SULPHUR SPRINGS

FREE
Nationwide Bull Delivery!



f STEVENSON ANGUS.com
Hobson • White Sulphur Springs
MONTANA (406) 423-7500

Home of America's Longest Established Annual Bull Sale

- 25 **Bar JV Angus Bull Sale** • Fairview, MT • 1pm
(406) 798-3506 • (406) 798-3653 • www.BarJVAngus.com
- 26 **Peterson Grain & Cattle Bull Sale** • Havre, MT • 1pm
(406) 945-0544 • (406) 945-2717 • (406) 945-1335
www.PetersonGrainAndCattle.com
- 27 **Cactus Cattle Company Bull Sale** • Belle Fourche, SD
1pm • (406) 891-5811 • (406) 971-5811 • www.CactusCattleCo.com
- 27 **Gartner-Denowh Angus Ranch Annual Bull Sale**
Sidney, MT • 1pm • (406) 798-3355 • (406) 798-3541
www.GDAR-Angus.com
- 27-28 **Vermilion Ranch Angus Spring Production Sale** • PAYS
Billings, MT • 11am • (406) 670-0078 • www.VermilionAngus.com

April 2025

- 1 **Hinman Angus Annual Bull Sale** • Malta, MT • 1pm
(406) 654-1809 • www.HinmanAngus.com
- 2 **Nissen Angus Annual Production Sale** • Chinook, MT • 1pm
(406) 949-1101 • (406) 262-4125 • www.NissenAngus.com
- 2 **Pleasant Valley Angus Bull Sale** • Sidney, MT • 1pm
(406) 489-0809
- 3 **Arntzen Angus Ranch Production Sale** • Hilger, MT • 1pm
(406) 462-5557 • www.ArntzenAngus.com
- 4 **Midland Bull Test Angus Day** • Midland Bull Test • Columbus, MT
11am • (406) 322-9911 • (406) 322-5597
www.MidlandBullTest.com
- 7 **Fitzsimmons Baltrusch Angus Production Sale** • Havre, MT
1pm • (406) 570-8646 • www.FBARanch.com

- 8 **Hilltop Angus Ranch** • Denton, MT • 1pm • (406) 366-3461
www.HilltopAngus.com
- 9 **Pass Creek Angus Bull Sale** • Wyola, MT • 1pm
(406) 343-2551 • www.PassCreekAngus.com
- 10 **Carr Angus Ranch Bull Sale** • Hobson, MT • 1pm
(406) 570-4264 • www.CarrAngus.com
- 11 **Regency Acres Bull Sale** • Sidney, MT • 1pm • (406) 480-5988
www.RegencyAcres.com
- 12 **Math Farms Angus Bull Sale** • Glasgow, MT • 1pm
(406) 674-5562 • www.MathFarms.com
- 14 **C Spear Angus Annual Bull Sale** • Billings, MT • 1pm
(406) 670-0689 • (406) 670-6311
- 15 **Treasure Test Bull Sale** • Western Livestock • Great Falls, MT
1pm • (406) 788-9869 • www.TreasureBullTest.com
- 16 **Milk River Bull Sale** • Chinook, MT • 1pm
- 17 **Big Dry Angus Ranch Bull Sale** • Glasgow, MT • 1pm
(406) 977-2778 • www.BigDryAngus.com
- 18 **Timber Line Ranch "Bred for Business" Bull Sale**
Manhattan, MT • 1pm • (406) 581-4764
www.TimberLineAngus.com
- 18 **DeGrand Angus Bull Sale** • Baker, MT • 1pm
(406) 978-6423 • www.DeGrandAngus.com
- 24 **North Country Bull Sale** • Glasgow, MT • 1pm
(406) 724-3322 • (406) 853-5130 • www.NorthBenchLivestock.com

MONTANA ANGUS NEWS ADVERTISING RATES AND DEADLINES

Ad Size	Full Color Rate	Ad Dimensions (w x h)
Full Page	\$650	8.5" x 11" *See specs. for details
2/3 Page	\$550	7.5" x 6.25"
1/2 Page Vert	\$475	7.25" x 4.9167"
1/2 Page Horiz	\$450	7.5" x 4.75"
1/3 Page Horiz	\$300	7.5" x 3.125"
1/3 Page Vert	\$300	2.34" x 10"
1/4 Page	\$250	3.625" x 4.5"
Business Card (B&W)	\$75	4.75" x 2"

Publication Specs

Trim Size 8.5" x 11"
Bleed 8.75" x 11.25"
Live Area 7.5" x 10"
Four Color Process (CMYK)
PDF format (press quality)
CMYK, all fonts embedded

TO RESERVE YOUR SPACE, CONTACT:

Jesse Thompson • montanaangusnews@mtangus.org • (406) 450-3429 • PO Box 25, Whitlash, MT 59545



MATERNAL MATERNAL MATERNAL

The **HA** prefix has been synonymous with high maternal females for decades. We strive for perfection in our cow herd, while also delivering weaning and feedlot performance.

Every breeding decision is based around building a better cow.

Worth The Weight . . .

*38th Annual
Bull Sale*

Selling

175 Registered Angus Bulls

Tuesday

April 1, 2025

1:00 pm MDT At the Ranch 10 miles east of Malta, MT

HA *Hinman Angus*

We do one thing . . . Angus!

HinmanAngus.com

Billy & Heidi Luloff
Billy's cell 406-654-4669

Tyler & Sascha Luloff
Tyler's cell 406-654-4609

Dave & Yvonne Hinman
406-654-1809

Dave's cell 406-654-4656

HinmanAngus@hotmail.com

PO Box 220 • Malta, MT 59538

Contact us for
your Sale Book!

RFM
RON FRYE MARKETING
406.600.7514

SUPERIOR
Livestock Auction
ALL NEW PUREBRED PLATFORM
Bid.SuperiorLivestock.com

Bulls that will keep you in the Cow Business!

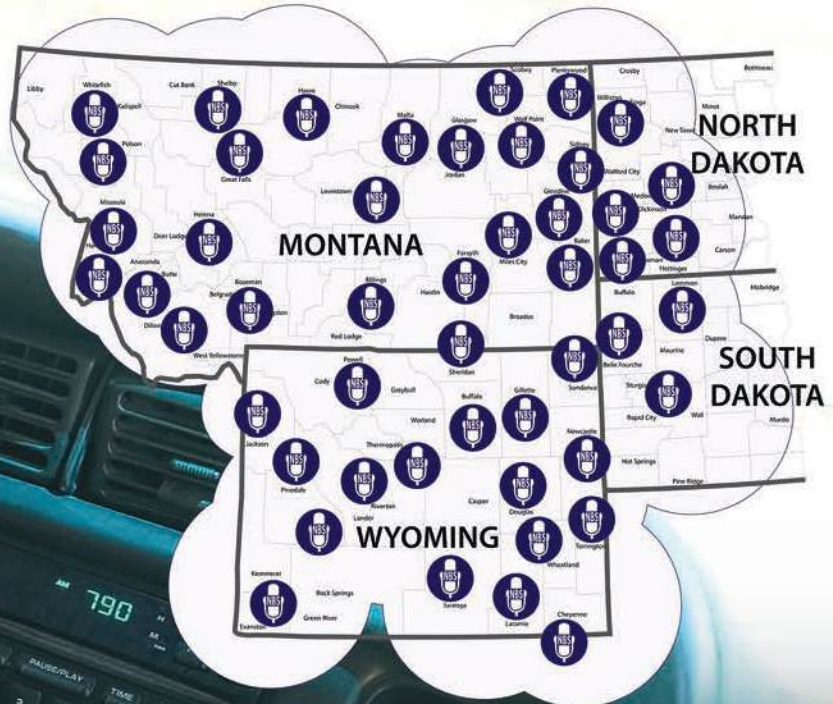


**Want to ride shotgun
with your buyers
every day?**

Reaching over 74% of Farmers and Ranchers!

**Strongest Coverage.
Best Value.
Since 1975.**

 Northern Ag Network
AFFILIATE RADIO STATIONS



Amelia Siroky
asiroky@northernbroadcasting.com
Call or Text: (406) 671 6974



**NORTHERN
AG
NETWORK**

NorthernAg.NET



MONTANA ANGUS TOUR

SEPTEMBER 17-19, 2024

LEWISTOWN, MONTANA

Showcasing
Cattle & Producers from the
Heart of Central Montana

Early bird registration pricing
available until August 1.

Register & Pay Online at:
www.mtangus.org/montana-angus-tour.html

TUESDAY, SEPTEMBER 17TH

LEWISTOWN

- Golf Tournament - Pine Meadows Golf Course, 9:00 a.m.
- Montana Angus Association Meeting
– Yogo Inn, 4:00 p.m.
- State Angus Social & Banquet
– Fergus County Trade Center, 5:30 p.m.

WEDNESDAY, SEPTEMBER 18TH

LEWISTOWN - JUDITH GAP - HOBSON

- Ballyhoo Printing & Design
- Gaugler Angus with Ray Gardner & Guest
Snowy Mountain Angus - Breakfast Stop
- Carr Angus
- Stevensons Diamond Dot - Lunch Stop
- Little Belt Cattle Company
- Judith Basin County Farms Feedlot
- Stevenson Angus - Dinner Stop

THURSDAY, SEPTEMBER 19TH

DENTON - EAST OF LEWISTOWN - NORTH OF LEWISTOWN

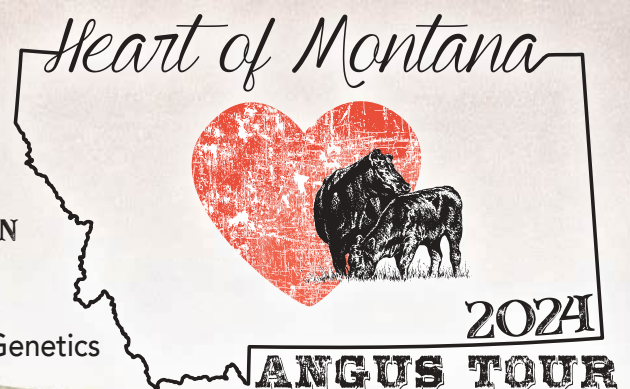
- Hilltop Angus - Breakfast Stop
- Dvorak Ranch
- Reisig Ranch with Guests Prairie View Angus & Rockin L Genetics
- Arntzen Angus - Lunch Stop

HOST HOTEL: Yogo Inn
211 E Main St. • Lewistown MT 59457
Reserve ONLINE or call 406-535-8721
Reference Montana Angus Tour for rate

ALTERNATIVE HOTELS

B&B Motel	The Calvert Hotel	Super 8 by Wyndham
406-535-5496	406-538-2581	406-535-5411

Contact us for more information at:
centralmontanaangus@outlook.com
406.366.0511



Find us on  Central Montana Angus Association

McDONNELL ANGUS

DECEMBER 4, 2024

WEDNESDAY - 1:00 PM
Midland Bull Test, Columbus, MT

150 Fall and Coming Two-Year-Old Bulls
30 Registered Bred Heifers

Beef Country Genetics Sale

One of the largest Efficiency Tested
bull sales in North America

Do the Math!

Efficiency-proven genetics offer up to 20% more savings on the cow herd... and 20% more savings in the feedlot, while still maintaining the same weaning weights.

It doesn't cost you any more than making sure you are using the right bulls and the right program.

MATERNAL Research from Canada, Australia, Texas A&M, University of Florida, Montana State University - Dr. John Patterson, University of Missouri, University of Illinois... have all shown efficiency gains of 10-20% in females tested to be negative RFI or sired by negative RFI bulls with no impact on weaning weight, fertility or yearling weight.

"By stacking generations selected for RFI improvement, greater than 20% in production efficiency can be achieved."

- Dr. Monty Kerley

That's over \$100/head savings in pasture and wintering costs.

STOCKER-GRASS A 20% savings in wintering and pasture costs can easily yield another \$50-\$70/head.

FEEDLOT Improvements in feed conversion have been proven up to 20%. Just a 15% improvement would be over \$130/head savings.

Beef Country Genetics offer...

Quiet Dispositions
Complete Performance
Strong Maternal Emphasis
Structurally Sound
Ultrasounded
Affordable

Free Delivery up to 400 miles
BVD-PI Tested
Breed-Leading Efficiency Sires
Genomic Tested
Wintering arrangements
available on bulls

All bulls individually measured for feed intake



CED +5 BW +2.0 WW +68 YW +127 MILK +26 MARB +1.11 RE +.47
One of our high-efficiency tested bulls in 2018. His sons and daughters have impressive phenotype, and his daughters have great udder and small teats. Top 3% of Vytelle/GrowSafe data base for RFI efficiency, top 20% for combined foot score, top 10% for Marbling, top 10% for \$C.

Also selling sons of:

Granger Black Eagle 822 A high-efficiency bull out of the 2019 Midland Test Sale.

Sterling Confidence 804 Top 1% of all breeds for RFI. Excellent feet, udders and teats. Top 15% for Marb and \$C.

S A V Rainfall 6846 Top 16% of all breeds for RFI. Excellent feet, udders and teats.

Byergo Jet Black H25 Top 6% of all breeds for RFI. Thick, easy doing calving ease bull.

Bar R Jet Black 5063 Top 8% of all breeds for RFI.

A A R Justified 8293 A low birth, high weaning weight son of KG Justified.

As well as: Vermilion Bomber · Vermilion Justified
Crouch Congress · Baldrige Versatile
S Architect 9501 · MAR Innovation 251



Sale broadcast online at
www.frontierlivesale.com

SALE BOOK AND VIDEOS WWW.MCDONNELLBEEFCOUNTRY.COM

McDonnell Angus

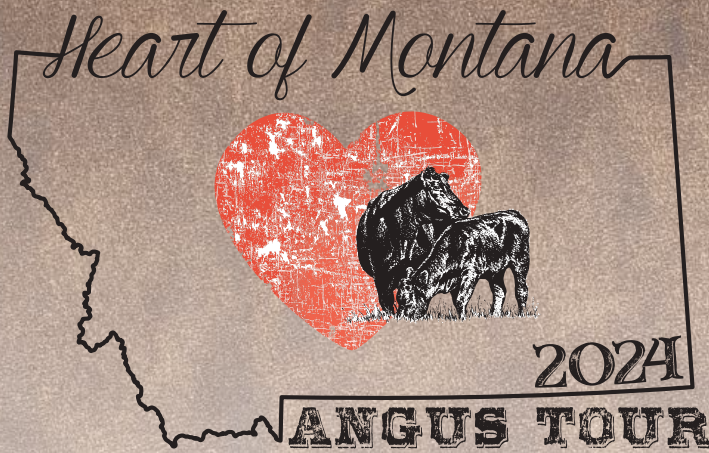
Leo & Sam McDonnell
Columbus, MT · 406-780-0176

MJB Angus

Matt Brown
Lodge Grass, MT · 406-679-1796

Frosty Creek Angus

Terry & Lavonne Frost
Roundup, MT · 406-323-3415



WEDNESDAY, SEPTEMBER 18



BALLYHOO PRINTING & DESIGN

Gerri Campbell
 187 W. Frontage Road, Lewistown, MT59457
 (406) 538-7988 • www.BallyhooPrinting.com
gerri@ballyhooprinting.com

Founded in 2000, Ballyhoo Printing & Design is dedicated to providing the highest quality products for business, personal projects, and gifting with extraordinary service, integrity, efficiency, and joy to all those we serve.

Bull sale catalogs are our specialty, and where we started over 25 years ago from Gerri's home office! Growing up on some of the most prestigious Angus ranches in Montana, our owner and founder Gerri Campbell is no stranger to ranch life, that work ethic, the cattle industry and seedstock production. Her dad, Gary Parker of Shamrock Angus, shared the challenges of finding a printer that understood the unique needs of ranchers. With his encouragement, Gerri began designing his bull sale catalogs in 1995.

Gerri utilized early technology to design more accurately and efficiently and worked with a small local print shop for production. The owner of that shop developed pancreatic cancer and Ballyhoo took the steps to become a full service shop. Gerri and her then husband John Campbell with their three month old son Parker and five year old daughter Adessa, having no prior experience in the printing industry, decided to

buy the shop. Gerri had one month of training as the learning by fire began with the birth of Ballyhoo Printing and Design in May of 2000.

Our cattle sale book production process is second to none in efficiency, ease, quality and dedication. Technology continues to be leveraged as we support and complete every step of the process right here, from guiding the gathering of data, to custom design, proofing, printing and mailing. This is a busy time of year for everyone, so it's important to us that we help ease the stress of catalog creation.

Annually we produce over 120,000 ag publications for over 70 different ranches. This includes catalogs, flyers, postcards and more! Additionally, we work with many small businesses, and help design and produce several personal projects including wedding invitations, business cards, invoices, custom drink ware, signage, banners, t-shirts, even golf balls! What do you want your logo, message, or picture on??

Just this summer, we have changed the shop from traditional offset printing to digital. The big old presses and bindery equipment have moved on to new homes. We are now running more efficiently while providing expanded full color printing, plus metallic silver, gold and clear. We're excited for you to see the changes in the shop!

Although we began with sale catalogs and they continue to be the heart of our business, Ballyhoo has grown and changed tremendously over the years. Along with anything on paper, we now also offer photo printing, wide format, and UV printing. We can print nearly any design on any surface - and we enjoy the challenge! Canvas, metal and acrylic wall art, drink ware, Christmas cards, promo items, gifts, and more can be ordered for pickup or shipping through our website. If you have ideas you aren't finding there, reach out and we can work together to make it happen! We also invite your own designs and creations, be it a catalog, art, or other project that needs to be on paper or beyond.

Our connection to those we serve fuels our commitment to delivering exceptional service, top-notch design and print expertise. We thrive on bringing your vision to life, elevating brands, and ensuring each creation mirrors your unique story. We sincerely invite you to create with us! Our entire Ballyhoo Crew looks forward to seeing you at our tour stop.

//

GAUGLER ANGUS

Mark & Laurie Gaugler
 4 Cemetery Rd • Judith Gap, MT 59453
 (406) 690-1546 (Mark's cell) • (406) 366-4041 (Laurie's cell)
www.GauglerAngus.com

Welcome to Gaugler Angus! Our mission is to practice stewardship of the land and livestock by raising superior Black Angus cattle while improving the rangeland. We are a family ranch committed to providing genetics that are profitable, functional, and last the test of time in varying environmental pressures. Gaugler's have a long history in the Central Montana area, as some of the first pioneers settling in Gauglersville (currently Martinsdale) in 1860. After running sheep and Hereford cows for many years, Charles acquired his first Black Angus heifer at



GARDNER ANGUS RANCH

Raymond Gardner
 PO Box 19 • Winnett, MT 59087
 (406) 351-9283
 gardner@midrivers.com

the Harlowton Fair in 1960. He and his wife, Pauline, quickly came to appreciate that these cattle were a good fit for the Judith Gap environment, being able to withstand tough winters and short grass country. Laurie, a fourth-generation rancher in Central Montana, currently practices veterinary medicine in the area. Mark and Laurie, along with their two daughters, are honored to continue their family ranching legacy.

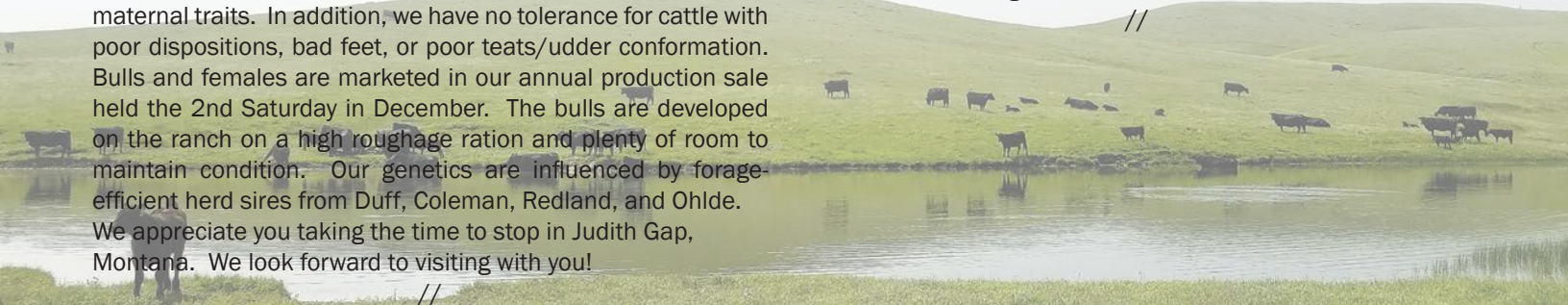
This past year, we teamed-up with Ray Gardner and are running his cow/calf pairs in the Judith Gap area and our yearlings in Winnett. Our breeding philosophies are consistent in type and kind, so our cattle compliment each other very well. Our commitment to breeding Black Angus cattle has remained steadfast in producing like-kind performance oriented bulls that are backed by superior maternal genetics. In order to remain profitable and sustainable, we demand that our genetics be efficient at converting grass to red meat with minimal supplementation. Fertility is our first priority with heifers bred for 30 days and cows for 50-60 days. Most of our cows calve out on the range in April and May. We require every cow to raise a calf each year. Nature has a great way of culling cows with poor maternal traits. In addition, we have no tolerance for cattle with poor dispositions, bad feet, or poor teats/udder conformation. Bulls and females are marketed in our annual production sale held the 2nd Saturday in December. The bulls are developed on the ranch on a high roughage ration and plenty of room to maintain condition. Our genetics are influenced by forage-efficient herd sires from Duff, Coleman, Redland, and Ohlde. We appreciate you taking the time to stop in Judith Gap, Montana. We look forward to visiting with you!

Gardner Angus Ranch was started in the mid 70's by the Gardner family, Ray, Kale, Colter and Jade. It is located in the heart of Petroleum County near Winnett, Montana. In 2023 we teamed with Gaugler Angus from Judith Gap, Montana. In doing so, we moved the majority of the cow herd to Judith Gap and run the yearlings from both of the ranches, Judith Gap and Winnett. The two ranches have the same breeding philosophy which consists of moderate frame, docility and excellent performance. Our goal is to provide genetics that are profitable, functional and sustainable in Winnett, and Judith Gap, Montana.

The registered mature cows are synchronized and bred to start calving April 1st. Our cow herd consists largely of OCC Paxton genetics. Paxton's grandson, OCC Cortez also produced some excellent progeny. Additionally we have used sires, External Law, Redland Trendsetter, 1869, Duff 4, For Real, Duff Honcho, Coleman Mission. 250 head of heifers are synchronized and bred to calve starting in mid March. We will offer some of these bred heifers through the annual production sale the first Saturday in December at Judith Gap. I have also done some ET work with cows, S&R Miss Thunder 528 and S&R Miss Thunder 422 and S&R Paxton 3116Incl - including the privilege of selling the donor cows 528 and 422 internationally.

We look forward to showing some ET calves from 528, 422 and 3116 at the Angus Tour.

//



//



SNOWY MOUNTAIN ANGUS

Theresa Abegglen

97 SMA Lane • Garneill MT 59453

(406) 374-2222 • (406) 366-0292

ffatheresal@yahoo.com • www.SnowyMountainAngus.com



CARR ANGUS RANCH

Clint & Valerie Carr • Kyle & Stephanie Carr

Hobson, Montana

(406)570-4264 • (406)350-4444

Kyle@carrangus.com • www.CarrAngus.com

The Snowy Mountain Angus Ranch was started as a registered herd in 2014. Theresa Abegglen owns and operates the small family ranch with her Mom, Patti Lemmon. Theresa is the third generation on the operation, nestled in the base of the Snowy Mountains in the heart of central Montana. The original registered herd was started from Kim Abegglen of Abegglen Livestock and a group of heifers purchased from Krieb's Ranch out of Nebraska.

Our small herd is primarily calved out in January and February providing bulls with enough maturity by the bull sale to get their job done. We also sell a small group of females in the fall as well as replacement-quality heifers. We had our first bull sale in the spring of 2016 with JR and Katie Lund of Rockin L Genetics and have continued as a partners in the sale since. Our 10th annual bull sale is scheduled for March 18, 2025!!

Since the majority of the work is done by a small crew of primarily women, the cattle maintain a calm temperament. We try to keep our cattle quiet and easy to work with for those that purchase our bulls and heifers. We strive to produce animals that perform all while keeping a workable disposition. We cull very hard- whether bulls or cows. If they don't check the boxes, they don't get to stay on the ranch or walk through the ring on sale day. The main focus of Snowy Mountain Angus has always been maternal power and performance. The small size of our herd allows us to personally know each and every animal on the place, which allows us to understand their behavior during calving and while in the pasture. The females become part of the family and we know what to expect of our herd, going back several generations. The cows are the heart of the herd and we treat them as such. If we take care of our girls, they will take care of us.

We put a lot of effort into our herd and strive to put quality calves on the ground and are extremely proud of our herd and our family ranch. If you have any interest in visiting our place or hearing any more about our operation, give us a shout anytime. Thank you for your time and support in the Montana Angus Industry.

//

Clint and Valerie (Stevenson) Carr officially began operating as Carr Angus Ranch in 2010. The Carr's had previously been in partnership with Basin Angus Ranch and upon the Basin dispersion, retained a small herd of registered cows. Their son Kyle and his wife Stephanie returned to the ranch full time in 2014 to manage the cow herd and currently handle most of the day-to-day operations, raising cattle, hay and kids.

With a goal of developing high producing maternal cows, the herd has grown to nearly 300 registered females through thoughtful management, precise culling and careful selection. The focus has been on producing cows that bring in a quality calf, stay in good condition and breed back in a timely manner as well as are phenotypically correct and exhibit good dispositions and excellent mothering ability. With these strict guidelines in place, the herd has an impressive percentage of pathfinder cows, some with four generations currently in active production.

The cows are AI bred to calve beginning the second week of January and calving primarily wraps up the middle of March. Expanding into ET in the last few years with donor cows that include: CAR Lucy D205, CVC Ruby Z16, CAR Pamela D424, Diamond Trojan Erica 385H, and 2XL Clova Pride 6230 we currently implant 30-50 embryo's annually and owned donor cows have not missed a calving season.

The herd is pastured on native central Montana grass - and calves never receive creep feed. Calves are culled heavily at weaning, retaining only the top heifers for development and through intense selection based on phenotype, genetics and performance the bulls are narrowed down to 60 head to develop on a high roughage ration for potential sale bulls. Since 2017 Carr Angus has hosted an independent bull sale, held the 2nd Thursday in April at the ranch just outside of Hobson (come rain, shine or freezing sleet). The top 50 head are included in the annual sale with a few offered private treaty.

With an impressive crop of calves in the pastures from sire groups including: CAR Hobson, Basin Jumbo 1315, FHCC Foundation 1558, Diamond Cavalry 104, Baldrige Versatile

and Diamond Logo 707H, the 2025 Bull Sale will be an offering to look forward to.

We are excited to welcome you to Hobson and Carr Angus for the 2024 Angus Tour. If you would like to visit about our cattle at any time, our door is always open. You can get the latest updates on Facebook at Carr Angus Ranch or online at www.CarrAngus.com. We look forward to seeing you on the tour!

//



STEVENSON'S DIAMOND DOT CATTLE COMPANY

Clint & Adana Stevenson
PO Box 178 • Hobson, MT 59452
(406) 374-2250 • (406) 366-9023
stevensondot@yahoo.com
www.StevensonsDiamondDot.com

Stevenson's Diamond Dot was formed in 1992 by Clint and Adana Stevenson. Upon their graduation from Montana State, the newlyweds, with the help of Clint's parents, Wayne and Marian Stevenson, purchased a ranch south of Hobson which adjoined Clint's previously acquired land. The story of the Diamond Dot cow herd began long before, being influenced by 64 years of Stevenson Family genetics. The foundation starts with a group of cows Clint put together in his youth, including his very first heifer in 1979, a set of heifers from his father Wayne's Basin Angus Ranch, and several groups of embryos.

From 1992 until 2010, Diamond Dot sold cattle through the family marketing company, Stevenson/Basin. Today, Diamond Dot markets approximately 625 bulls annually through a Fall sale, Spring sale, and private treaty sales. 2024 marks the 14th year of Diamond Dot's sole fall production sale. The fall sale is held the Monday after Thanksgiving, offering 240 yearlings bulls, 130 coming two-year-old bulls, 100 registered females, and over 1100 commercial females. The spring sale is unique as the bulls are on display at the ranch location a few miles south of Hobson, but the sale is held at Tallboys Tavern, thus the name "Bulls and Beers". Private treaty bulls are available year-round.

Clint and Adana raised five children, three of whom live on

the ranch. Faith breeds and trains horses along with handling the ranches' marketing, helping with genetic selection, and working cattle. Abby recently became the Vo-ag teacher in Hobson. Her husband, Ryan Carroll, handles mechanical repairs and maintenance on the ranch. Carson and his wife Zoe are involved in all aspects of work on the Diamond Dot, from farming and irrigation to bull development and delivery. Zoe is also an aspiring young artist, capturing the ranch life in paintings and drawings, much like Charlie Russell.

Wayne, the oldest son, is a graduate of Loyola School of Law. He and his wife Kailah, a Mortgage Banker, live and work in San Francisco. Rachael, the youngest daughter, is recently married and has begun classes at the University of Montana School of Law. Her husband, Dylan Dean, is a Computer/ Electrical Engineer currently pursuing a graduate degree.

In addition to the immediate family, a lot of the crew are part of extended family or have become like family over the years. Some employees have been with the ranch for 50+, 30+, 25+ and 10+ years. An operation of this size only works with people who take pride in their job and are committed to excellence.

Over the years Diamond Dot has transitioned its farming operation to mainly producing forage for the cattle, only selling crops if there is surplus. In total about 4500 acres are cropped, of which 600 are irrigated. This feed is utilized to develop all the bulls and heifers on the ranch.

The cow herd consists of several different calving groups. Most of the cows calve from mid-January to mid-March with the front end of these calves becoming the yearling bulls in the fall sale.

A specific set of cows is designated to produce the fall sale two-year-olds. Two-year-old bulls are also selected from a group of March and April ET Calves. A select set of cows calve in early fall and produce the lead off bulls for the spring sale. In addition to the registered cows there is a large group of Commercial cows that begin calving April first.

Diamond Dot strives to produce a moderate framed, problem free, easy fleshing cow that will produce a big calf and thrive even in harsh environments. The latest technology including DNA and EPDs are utilized in cattle selection along with a strict culling program on all cattle. At the Diamond Dot, the most important thing remains the herds' look and type.

Stevenson's Diamond Dot welcomes you to the tour here in Judith Basin area and appreciates your interest in the program. Be sure to check out this year's fall production sale on December 2nd.

//



MONTANA ANGUS TOUR
SEPTEMBER 17-19, 2024
LEWISTOWN, MONTANA



LITTLE BELT CLASSIC

Rod Mikkelsen, Brian Frank, Kensey Mosher
203 Macaroni Hill Rd • Hobson, MT 59452

Rod: (406) 350-5366 • Brian: (406) 350-2175

littlebeltclassic@gmail.com • www.LittleBeltClassic.com

The Mikkelsen's stem from a long line of diversified agriculturalists. A strong passion for producing quality animal protein has always remained strong and although the herd is largely commercial, our heart lies within the registered black Angus mama cows. A long time employee, Brian Frank, has been perfecting his personal herd for nearly 30 years with top genetics from all over the region. Shortly after merging with the Mikkelsen Ranch, The Little Belt Classic Production sale was started and two great herds of cattle came together with a shared common goal of producing top notch bulls that not only have power, fertility, and structural integrity, but bulls that can withstand the harsh conditions that reside in central MT.

While the live production sale has only been running for 6 years, we have been raising and selling Registered Angus and Hereford cattle for well over 50 years combined. We are proud

of the seed stock we have been producing and work really hard to hold the herd to a high standard in terms of feet and udder quality, as well as easy fleshing and disposition. We are happy with the direction of our sale, but we are never fully satisfied and are working constantly to push forward and better our herd. Our annual production sale is held the second Saturday of November and offers 50 head of angus bulls, as well as a set of no brand bred heifers, selected as replacements right out of the heart of our commercial herd. This year we will have bulls available by Ellingson Prolific, Connealy Craftsman, Coleman Rock, Sterling Pacific, and Sitz Classic.

We hope you enjoy our offering and if there is any interest please don't hesitate to reach out to any of us.

//



JUDITH BASIN COUNTY FARMS, LTD

Andy Kellom, General Manager

342 Sale Barn Drive • Hobson, MT 59452

(406) 423-5808 • office@jbcfarmsltd.com

Judith Basin County Farms Ltd was founded in March of 2020. JBC Farms began with the purchase of the feedlot and farm and ranch property near Hobson from Bos Terra that was historically Basin Angus Ranch. The owners of JBC Farms are the brothers from the Schooten and Serfas families from southern Alberta. Both families farm and operate feedlots across southern Alberta. JBC Farms was established as a supply line of high quality feeder cattle for their Alberta finishing operations. Today, JBC Farms is farming approximately 20,000 acres on both owned and leased ground. The farm is set up to supply feed to the feedlot with the main crop being silage. Many varieties of both winter and spring cereal grains are grown as well as corn silage on irrigated ground. Approximately 4,000 yearling steers are run on grass in the immediate area and the feedlot capacity is approximately 30,000. The feedlot is focused on a forage based growing ration with cattle gaining approximately 2.5 lbs per day. JBC has in recent years invested in the infrastructure of the feedlot including a new concrete silage pad as well as a completely new and redesigned water system. Current projects include a large storage lagoon for fresh water that will be able to supply more water to the feedlot during peak demand. JBC Farms currently employs approximately 45 people in full and part time capacities.

//





STEVENSON ANGUS RANCH

Keith, Darrell, Bob, and Jake Stevenson
 350 JRS Lane • Hobson, Montana 59452
 Keith: (406) 350-5450 • Darrell: (406) 350-5443
 Bob: (406) 350-5453 • Jake: (406) 570-4799
 www.StevensonAngus.com

Welcome to the 2024 Montana Angus Tour! Today, the Keith and Roberta Stevenson family continue to carry on the Stevenson Angus Ranch legacy with their sons and families.

Over a century ago, the first of the Stevenson family came from Missouri, then decided to make Central Montana home, even before the local community of Hobson was established. The rancher and the cowboy slowly tamed the wild country as the herds of cattle replaced the buffalo. The Judith Basin continues to stir the imagination and spirit today as it did for the cowboy artist Charlie Russell over 100 years ago.

James R. Stevenson’s son, Jamie, showed great interest in the land and eventually purchased a small parcel of 240 acres. Jamie and Jeanette Stevenson graduated from one of Hobson High School’s first graduating classes and were married in 1936. Together, they established Stevenson Angus Ranch

purchasing their first registered heifers in 1947. While raising their five sons, they both were extremely active in promoting and organizing the growing Angus breed. Stevenson Angus Ranch was a Charter Member for the Montana Angus Association and the Montana Angus Auxiliary.

Our first Production Sale was held in 1961, this year will mark our 65th consecutive annual production sale. That offering is considered the longest established annual bull sale in America. In time, we expanded to fall and spring sale offerings, along with private treaty bulls, when available.

Our philosophy is simple...optimum balance. The commercial industry is our foremost concern, aiming to raise cattle that not only survive, but thrive in the harshest of conditions. We are maternally focused, while still pushing to improve overall performance and end carcass merit.

We’ve been fortunate to be a part of many prominent sires throughout the years. Our genetics have been exported to every state and every traditional beef producing country in the world.

The original Stevenson Angus Ranch is home to Keith and Roberta, Bob and Robin, their twins, Teller and Armani, Jake and his children, Zandy and Hayes. Michael and Dinah work and live in Raleigh, NC.

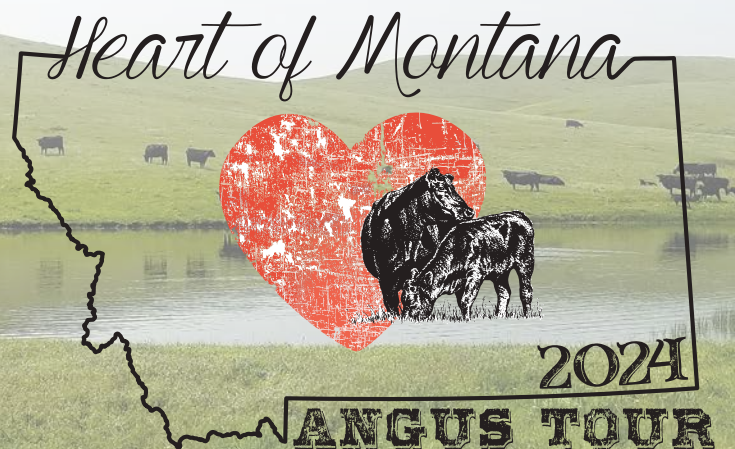
Darrell and Sara have recently relocated to a new ranch unit in Meagher County, just southwest of the Judith Basin. Their son, CJ, is currently serving with the United States Army Special Operations Forces, Fort Liberty, NC and daughter, Claire, is a graduate student with University of Georgia Athens.

In 1993, Keith served as President of the American Angus Association, while currently, Darrell is serving his second term on the American Angus Association Board of Directors. In 1997, Bob served as Vice-Chairman of the National Junior Angus Association.

We continue marketing efforts together with our Annual Fall Sale at the home ranch in Hobson and the Spring Sale at Stevenson Down T in White Sulphur Springs.

Once again, welcome to Montana and the wonderful Judith Basin! We certainly look forward to hosting you and talking Angus on our Tour stop!

//





HILLTOP ANGUS

1831 Iverson Road • Denton, MT 59430
(406) 567-2439

htangus@itstriangle.com • www.HilltopAngus.com

Hilltop Angus Ranch is located 15 miles north of Denton, MT on the Everson bench. The property encompasses rolling hills with rich fertile farm ground. We are just short of three miles from the Coffee Creek breaks. The ranch is rich in history as it was said that it was the location of a historic battle at a place called Blood Coulee.

The ranch started in 1914 by Otto Poser, Sr. In 1923 Otto Poser, Jr. was born and thus the beginning of what is today 100 years of farming and 50 years of registered Angus Cattle. The ranch continues to be operated by the same family in the same location. The ranch is currently owned by Otto and Dolly's son Gary Poser and their grandson, Cory Poser. Gary grew up on the ranch and received his schooling in Denton and attended college at Montana State University - Bozeman graduating with a degree in Business.

He worked away from the ranch many years before coming back in 1985 to join as a partner with his father Otto Poser, Jr. Gary's favorite times of the year are harvest and seeding. Gary is married to Carmen and together they have 10 Children and several grandchildren.

Cory grew up in Denton and ventured off to Montana State

University - Bozeman on a track scholarship. After college, Cory joined the Navy and served his country in the Persian Gulf and Iraq Wars.

Cory always had a deep love for the ranch and knew he wanted to ranch side by side with his dad. He returned in 2003 and is a partner. Cory is married to Tammie and together they have one pheasant-hunting dog named Demi. Their newest venture is showing cattle with their niece, Caitlynn Poser.

Hilltop Angus Ranch hosts an annual Production Sale the second Tuesday of April. Every year we offer 100 performance test registered Yearling Black Angus Bulls. Hilltop Angus strives to produce some of the best cattle for the Black Angus connoisseur. The ranch also raises small grains including winter wheat, spring wheat and barley.

//



DVORAK RANCH

Cathy Dvorak, Ron Dvorak
335 Dvorak Lane • Lewistown, MT 59457
dvorakcathy@gmail.com

Welcome everyone to the 2024 Montana Angus Tour in Central Montana. The Dvorak Angus ranch is located 20 miles southeast of Lewistown in the foothills of the Snowy Mountains. The ranch first started in our family in 1956 when my grandfather purchased it and moved from Garfield county. Grandpa raised sheep and Herefords, but in December 1975 when my parents bought the ranch, dad started buying Black Angus Bulls. Over time, the sheep herd slowly dwindled and in 1990 the last 40 of the sheep were dispersed. This was mainly due to the heavy predation in the area. I came back to the ranch full time in 1992 after graduating from Montana State, (Go Cats) and a short stay in Iowa.

My nephew and his wife (Zach & Kelsey Proue) came on the scene three years ago. It is great to have the next generation around to teach the ropes to and of course share in the workload.

Over the last 20 plus years we have been keeping most of our heifer calves and AI'ing them, along with some cows if the year allows, to help improve the genetics behind our cattle. We strive to raise cattle that are long, deep, thick and are structurally sound as well as good mothers. This focus has

helped us achieve a weaning weight of around 780 pounds for our steer calves in the fall and leaves us with beautiful heifers to winter and save as replacements. Our steer calves are sold on Northern Livestock video auction and the bred heifers are sold to ranches around Central Montana and beyond.

We hope that everyone comes to view our operation and enjoys themselves on the tour. Wishing the best for everyone in the years to come and visitors are always welcome to stop by and visit whenever possible.

//



REISIG CATTLE

Dustin Reisig
 1172 Grinde Road • Lewistown, MT 59457
 (406) 350-1800
 dustin@reisigcattle.com • www.ReisigCattle.com

Welcome to Reisig Cattle! It is so exciting to be at the point where we are today. Reisig Cattle started with Dustin and Rebecca in 2003. We expanded to the family in Hardin in 2007. We partnered with Limestone LLC. (Manager - Mike Marlow). We also partnered with Buford Ranches LLC. (Sam Buford - Owner / Mike Horrell - Manager). We found that the Elba and the Eriskay cow families worked very well not only in the south but also in our area for our customers, providing what we still maintain today: good-footed, good-uddered and big-bodied cattle. The herd grew rapidly and we had our first production sale 2010. We had consecutive sales following until 2022. We now offer both bulls and females private treaty.

In 2018 we transitioned the herd to Fall calving, enabling us to provide 18 month old bulls to our customers. It has been so beneficial for us as well as our customers as the bulls are so much more mature, being able to cover more cattle and hold up even with heavy use, as evidenced by the longevity of our bulls.

On display will be Senior Sires: ZWT Intervention and Buford Highlander. We are also excited to be able to show off our newest herd sire Ingram Marksman.

We look forward to seeing you this Fall!



ROCKIN L GENETICS

JR & Katie Lund
 PO Box 42
 Winnett, MT 59032
 (406) 350.1059 • (406) 951-0212
 rockinlgenetics@hotmail.com

No doubt being a first generation rancher is a hard task; sometimes feeling nearly impossible, but we have always had a dream to ranch and to own a piece of land that we can raise our family on. After graduating from college, we made that dream a reality and took a leap; buying our first seven head of Registered Black Angus. Heired a single iron brand and a lifetime membership to the American Angus Association by grandparents, Robert & Jeanne Lund, we were in business. A couple years later we were able to buy a large group of registered, mother cows from the ranch we had been managing as an investment property in Central Montana. Fast forward to 2017 and we were finally able to buy a winter base in Petroleum County. We rely heavily on lease ground and have been very fortunate and extremely blessed, (sometimes with impeccable timing) on having the “right” people step into our lives

Rockin L Genetics started as a vision by J.R. and Katie Lund; two young college kids in love with extreme dedication (and maybe, a little stubborn streak) to succeed and fight for the “American way of life.” Our current operation consists of 150 head of registered Black Angus cows and 120 head of commercial cows. Calving is set for mid-March and weaning mid-September, with an annual Bull Sale the 3rd Tuesday of March in Lewistown. We strive to raise high performance cattle with balanced maternal and carcass traits, as well as exceptional docility and ease to work.

We have a custom breeding business that has also grown into a sales rep position with ABS Global. We breed around 2000 head of cattle every spring and are continually obtaining a larger client base. Being knowledgeable with AI protocols for different breeding programs has grown the trust of our clients

and built our reputation. Katie has a bookkeeping business that allows her to work from home and raise the kids on the ranch. We've also recently started selling direct; partnering with the Beards to sell premium Wagyu and Angus beef; check out Black Butte Beef! No doubt, we have the drive to be successful and are building a strong foundation for our future, the future of cattle and our children and are very proud of where we've come from. We take great pride in our family, faith, cattle, working hard and try to embrace and love every minute of the chaos. Bodie (13), Nash (11), Oakley (8), Blaze (5) and Kort (2) are the light of our lives and our right-hands. There have been many ups and downs and a lot of bumps along the way, but we are determined to make this the best life; because, there really is no better life!

//



ARNTZEN ANGUS RANCH

Keith/Kevin; Doug/Brad/Derik Arntzen
 577 Arntzen Lane • Hilger MT 59451
 (406) 462-5557

arntzen@arntzenangus.com • www.ArntzenAngus.com

Arntzen Angus Ranch (AAR) is a multi-generational, family-operated ranch located 23 miles north of Lewistown, MT. AAR is an agriculturally diversified ranch that holds operations in both ranching and farming sectors. It is home to 1,000 registered and commercial cows with land primarily dedicated to hay, as well as wheat and barley production.

Ken & Sherry Arntzen started the operation in 1953 with five black Angus heifers and a black Angus bull. Ken sold registered



bulls via private treaty until his passing in 1976. In 1977 the ranch held its first annual production sale; and we've continued with an annual sale ever since. Our annual spring production sale typically sells approximately 200 yearling bulls and a select offering of registered replacement yearling heifers.

Our bulls hold great influence within the Angus breed and can be found within numerous pedigrees throughout the nation. In our almost 70-year history, Arntzen Angus Ranch may be best known as the birthplace for AAR New Trend, AAR Really Windy 1205, and AAR Ten X 7008 SA.

Family is an understated, but incredibly important attribute throughout our operation. We are a fourth-generation operation with brothers, cousins, and uncles working side by side every day with a common goal. Brothers Keith (wife Kristine) and Doug (wife Gayle) carried on the registered herd after Ken's passing; and four generations later the legacy continues.

Keith's son Kevin (wife Krista) carry on daily operations with their family and children. Keith's daughter Karrie Sramek (husband Chris and daughter) live near the family ranch with cattle and spraying operations. Kimberly Hansen (husband Kevin) and children are also rooted close to the ranch, involved in teaching, petroleum engineering and farming.

Doug's three sons and their families: Brad (wife Stacie), Derik (wife Corry), Erik (wife Amber) are involved in daily operations and daughter Jennifer Denowh (husband Chad) and kids run cattle operations in Sidney, MT.

Additionally, Logan Tomschin (wife Megan) and Brace Pingetzer (wife Haley) and kids assist with all ranch operations.

Our cattle philosophy is simple: easy fleshing, high maternal, calving-ease cattle with a genetic emphasis on performance for environmental conditions. We believe in building from a solid base, and require our animals to uphold our expectations from generation to generation.

Our focus is on maternal characteristics that will produce the desired easy fleshing, great-uddered females that can consistently breed back and yield healthy, productive calves.

We cull heavy and utilize intense AI programs that aim to provide consistency to our customers, and that continue to add depth and quality to our cow herd. This is pivotal to our goal of providing customer satisfaction — producing a quality animal that provides you assurance in our product and what you can expect — the "Power of Predictability."

In the fall 2024 tour, Arntzen Angus is eager to showcase calves from Koupals B&B Bridger 2041; Simonson Stryker 942; and Woodhill Agenda G151-J043. We continue to utilize AAR sons and grandsons from proven herd sires KG Justified 3023; GDAR Load Up 7104. This group sells April 3, 2025 at the Ranch!

*Showcasing
 Cattle & Producers from the
 Heart of Central Montana*

KG RANCH

Production Sale

DECEMBER 6, 2024
BLACK ANGUS FRIDAY

12PM MST at the Ranch
 Three Forks, Montana

KG Justified 3023



CED	BW	WW	YW	SC	HP	SM	SW
+12	-1.8	+62	+109	+1.71	+18.1	+96	+84

AAA: 17707279

SIRE: Connealy Judgment
MGS: Sitz Wisdom 481T

Sitz Verdict 744 H



CED	BW	WW	YW	SC	HP	SM	SW
+6	+1.1	+79	+132	+5.7	+11.4	+55	+71

AAA: 19684244

SIRE: LD Capitalist 316
MGS: Sitz Upward 10559

JCH Logo 0193



CED	BW	WW	YW	SC	HP	SM	SW
+14	-1.7	+76	+130	+1.33	+23.2	+92	+80

AAA: 19799915

SIRE: SITZ Logo 12964
MGS: Connealy Mentor 7374

HA Opportunity H695



CED	BW	WW	YW	SC	HP	SM	SW
+5	+2.5	+94	+149	+1.79	+14.9	+76	+87

AAA: 19881062

SIRE: BUBS Southern Charm AA31
MGS: KG Solution 0018

Sitz Incentive 704 H



CED	BW	WW	YW	SC	HP	SM	SW
+8	+5	+77	+128	-1.0	+17.0	+107	+77

AAA: 19677938

SIRE: Sitz Stellar 726D
MGS: Sitz Invasion 574D

Sitz Impulse 732 J



CED	BW	WW	YW	SC	HP	SM	SW
+6	+1.6	+92	+160	+1.84	+17.4	+72	+88

AAA: 20010981

SIRE: Sitz Resilient 10208
MGS: Woodhill Blueprint

Selling

250 COMING
2-YR-OLD BULLS

180
COMMERCIAL
BRED HEIFERS

1-888-KG-BULLS

KG Ranch
 Registered & Commercial Angus
 Three Forks, Montana



Paul & Kaye Doddridge - Owners 406-285-3660
 Cody Jackson - General Manager 406-580-7366
 Scott Clarke - Cattle Operations 406-580-7666
 Greg Strohecker - Consultant 406-580-3660

RFM

RON FRYE MARKETING

406.600.7514

www.RonFryeMarketing.com

Ron Frye: 406-600-7514 Call. Text. Email.
Ronfryemarketing@gmail.com

WWW.KGRANCH.COM



MONTANA
2024-25
DIRECTORY
ANGUS

2 Bar Livestock

Chase Ostrum
PO Box 32
Fishtail, MT 59028
chaseostrum@gmail.com
(406) 780-1146

3210 Angus

John Patterson
123 Patterson Ranch Road
Columbus, MT 59019
blkcow@hotmail.com
(406) 445-2332 • (406) 425-3210

3C Cattle LLC

Chad & Lacey Sutherlin
3858 Illinois Bench Road
Stevensville, MT 59870
threecattleco@yahoo.com
(406) 360-1875 • (406) 544-0043
www.3CCattleLLC.com
See ad on page 57

4 Butte Cattle Co.

Kent & Judy Pike
445 Four Butte Lane
Chinook, MT 59523
fourbuttes@hotmail.com
(406) 357-2994

406 Cattle

Cody Sutherlin
418 Spooner Creek Ln
Stevensville, MT 59870
cjsutherlin@gmail.com
(406) 207-9176

4K Livestock Ent. LLC

Richard McKay
19201 Black Butte Rd.
Lewistown, MT 59457
krmcattle@gmail.com
(406) 366-3402

7 Bar Heart Registered Angus

Aimee Hachigian-Gould
PO Box 67
Ulm, MT 59485
MT7BARHEART@aol.com
(406) 866-3513 • (406) 899-7227
(406) 799-7051
Andrew & Ashley Gould: (406) 231-9601
Brandon & Katelyn Gould: (406) 590-4932

9-F Ranch Co. Inc.

Russell Berg
PO Box 83
Martinsdale, MT 59053
9-frch@mtintouch.net
(406) 572-3636

A

A Bar Angus

Duane & Julie Wacker
1100 Alec Roy Road
Roundup, MT 59072
wackerdj@midrivers.com
(406) 323-4456 • (406) 861-7459

Adams, Gary

See Yellowstone Boys & Girls Ranch

Adams, Gary & Holly

7419 Hesper Rd.
Billings, MT 59106
gary@legacylandslc.com
(406) 855-5230

Agri-Best Feeds

Scott Anderson
47 N. 15th Street
Billings, MT 59101
scott@agribestfeeds.com
(866) 601-6646
www.AgriBestFeeds.com
See ad on page 10

Ahearn, Mark

See Turner Meadow Ranch

Aiton Angus

Sam & Leslie Aiton
PO Box 730
Harlowton, MT 59036
la@itstriangle.com
sta@itstriangle.com
(406) 632-4151 • (928) 713-5900
www.AitonAngus.com

Albin, Cory

See Beartooth Angus

Allen, David

See NILE Stock Show & Pro Rodeo

Andersen, Scott & Nicole

See Blacktail Angus Ranch

Anderson Cattle Company

Kim Anderson
632 CB Route Road
Glendive, MT 59330
loralee@midrivers.com
(406) 945-4411

Anderson, Scott

See Agri-Best Feeds

Apex Angus

Daryle & Pam Swanson
8056 Valier Hwy.
Valier, MT 59486
apex@3rivers.net
(406) 279-3548 • (406) 472-3341
www.ApexAngus.com"
See ad on page 87

Armstrong Angus Ranch

Chad Armstrong
55 Cemetery Hill Road
Cardwell, MT 59721
armstrongangus@live.com
(406) 224-0586
www.ArmstrongAngusRanch.com
See ad on page 47

Arntzen Angus Ranch

Kevin/Keith/Doug/Brad/Derik Arntzen
577 Arntzen Lane
Hilger, MT 59451
arntzen@mtintouch.net
(406) 350-1612
www.ArntzenAngus.com
See ad on page 88



***Local, national, and international livestock industry news
Livestock auction reports • Award-winning columnists
Classifieds • Special interest sections • Much more!***

\$55 **OR** **\$100**
ONE YEAR **TWO YEARS**

VISIT US ONLINE FOR THE LATEST STORIES, SALE REPORTS, UPDATES & SUBSCRIBE!

www.TSLN.com

CALL OR EMAIL TO START A FREE 4-WEEK TRIAL SUBSCRIPTION!

1501 5th Ave., Belle Fourche, SD 57717 | 877-347-9100 | office@tsln-fre.com



*\$100 for 104 issues (2 years) and \$55 for 52 issues (one year) rate valid for all new and renewing subscribers. Special rate not dependent on length of subscription. Must call 877-347-9100 to subscribe at this rate. Subscribers will be billed one time at \$100 for 104 issues or \$55 for 52 issues. All subscriptions include full digital access to our online edition at www.tsln.com. A sincere thanks from all of us here at Tri-State Livestock News.

B

B & K Livestock

Bryan Vincent
6647 N. Kolin Rd
Moccasin, MT 59462
bnkvncn@gmail.com
(406) 423-5313

B & L Farm & Ranch LLP

Bruce Hould
5867 Hwy. 363
Malta, MT 59538
houldrch@itstriangle.com
(406) 654-1762

Ballyhoo Printing & Design

Gerri Campbell
187 West Frontage Road
Lewistown, MT 59457
gerri@ballyhooprinting.com
(406) 538-7988
www.BallyhooPrinting.com
See ad on page 4

Balthrusch, Nathan

See FBA Ranch

Bar JV Angus

Jim, Dale, or Cody Vitt
14043 County Road 340
Fairview, MT 59221
barjvangelus@gmail.com
(406) 798-3398 • (406) 480-5676
(406) 798-3653
www.BarJVAngus.com
See ad on page 75

Barragree Cattle Co

Brian Barragree
Box 562
Absarokee, MT 59001
(406) 780-1219

Basin Angus

Leisa & Brady Johnson
PO Box 198
Hobson, MT 59452
See ad on Inside Front Cover

Basin Angus

Trevor & Brittany Berg
#17 Pinewood Dr.
Park City, MT 59063
(406) 366-3612
See ad on Inside Front Cover

Basin Angus Ranch

Doug, Sharon, Nicole Stevenson
PO Box 1119
Laurel, MT 59044
doug@basinangus.com
sharon@basinangus.com
Doug (406) 350-0350
Sharon (406) 350-2332
www.BasinAngus.com
See ad on Inside Front Cover

BB Ranch

William Brennan
854 Hwy. 359 • Cardwell, MT 59721
cbrennan6@juno.com • (406) 287-7942

Beartooth Angus

Cory Albin
2623 Huckleberry Ln N
Billings, MT 59106
beartoothangus@gmail.com
(406) 794-1287
See ad on page 20

Becker Farms Angus

Judy or Dean Becker
1244 East G Road
Ballantine, MT 59006
beckerfarms@nemont.net
(406) 967-2136 • (406) 860-1019

PROUD TO WORK WITH MONTANA ANGUS PRODUCERS!

- Current Industry News Weekly
- Timely Sale Reports
- Breeder Features
- Regional Events & Happenings
- Professional Ring Service
- Sale Catalog & Flyer Design & Printing



THE
**CATTLE BUSINESS
WEEKLY**

P.O. Box 700 • Philip, SD, 57567

Phone: 605-859-2022

www.cattlebusinessweekly.com



Andy Rest

Ad Sales/Ring Service
Billings, MT
406.670.5678

JOIN US FOR OUR

Online Internet Auction

DECEMBER 8TH, 9TH, & 10TH, 2024

Diamond  ngus

*57 Years of Producing
Longevity & Functional
Focused Cattle*

**DIAMONDDANGUS.COM
18106 VALIER HWY
VALIER, MONTANA 59486
406-799-3480**

Beck, Dick
See ORGen Inc.

Belling Ranch
LeRoy Belling
16755 Wingvalle Ln
Baker City, OR 97814
(541) 523-1522

Bennett, Porter
See Hollow Top Angus

Berg, Russell
See 9-F Ranch Co. Inc.

Berg, Trevor & Brittany
See Basin Angus

Berry Angus
Eli Berry
124 McKeith Road
Reed Point, MT 59069
berryanguscattle@gmail.com
(406) 780-0215

Best Angus & Quarter Horses
Pete Best
1930 118th Ave NW
Watford City, ND 58854
bestangus@yahoo.com
(701) 570-6959 • (701) 842-4865
www.BestAngusAndQuarterHorses.com

Better Fed Foods
Bernie Hanson
15596 Clary Circle
Wamego, KS 66547
info@betterfedfoods.com
(830) 353-3199
www.BetterFedFoods.com

Beuerman Angus Ranch
Erich Beuerman
135 Meriwether Rd
Cut Bank, MT 59427
ebeuerman1@gmail.com
(406) 551-3759

Bickle Cattle Co.
Bill Bickle
371 Westmore Road
Ismay, MT 59336
billbickle@hotmail.com
(406) 772-5852

Big Dry Angus Ranch
Brent and Jack McRae
32 McRae Lane
Jordan, MT 59337
bdar@outlook.com
(406) 977-2778
www.BigDryAngus.com

Bignell Angus Ranch
Jim & Carrie Bignell
PO Box 377 • Avon, MT 59713
cbignell7692@gmail.com
(406) 492-7692

Black Pine Farm
Bill Jensen
26 Wilson Road • Heron, MT 59844
bpfangus@yahoo.com
(406) 847-2733 • (406) 250-2289

Black Wave
Brian Considine
2400 Marker Rd • Middletown, MD 21769
brian_considine@hotmail.com
(301) 748-6057

Blacktail Angus Ranch
Scott & Nicole Andersen
7700 Hwy. 91 N
Dillon, MT 59725
sanderson7700@gmail.com
(406) 683-4980
www.BlacktailAngus.com

Blevins Angus Ranch
Wayne Blevins
38306 Dellwo Road
Charlo, MT 59824
blevinsangus@blackfoot.net
(406) 644-2309 • (406) 274-2732
www.BlevinsAngusRanch.com



NutraLix Inc.
The Brand of Quality

The Brand Of Quality
Since 1987

For every feeding season choose the supplement that is proven to provide:

- Better Controlled Consumption
- Better Feed Utilization
- Better Overall Performance
- *Better Return on Your Investment!*

and has been the feeding solution for Angus Breeders for over 37 years and counting.

Call Today!
800.568.6952
www.NutraLix.com



**BULLS RAISED
ON FORAGE ONLY!**

OUR COWHERD
LIVES ON GRASS ALL
YEAR AND WINTERS
ON VERY LITTLE OR
NO HAY.

WE LET THE
ENVIRONMENT
SORT OUR CATTLE,
NOT EPDS.

INDRELAND ANGUS

REGENERATIVE GRAZING GENETICS
ANNUAL BULL SALE

DEC 9, 2024

70+ 18 MONTH OLD BULLS

100+ BRED FEMALES
INCLUDING CHOICE
OF BRED HEIFERS

CALL FOR MORE INFORMATION



Sale broadcast on:
www.frontierlivesale.com

Request a sale book:

INDRELAND ANGUS

ROGER AND BETSY INDRELAND

170 Glasston Rd • Big Timber, MT

406-932-4232 or 1-866-901-BEEF

iaranch@itstriangle.com

Visit us online

WWW.INDRELANDRANCH.COM

SALE SCHEDULE

DEC. 7-8

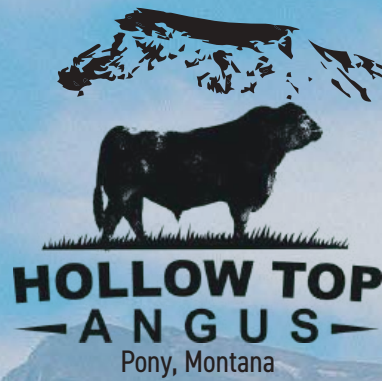
VIEW CATTLE

DEC. 9

VIEW CATTLE, ONLINE
OR ON-SITE BIDDING

LOTS START CLOSING AT 1:00 PM

LUNCH SERVED
EACH DAY.



SITZ PROFOUND 680G

Profound is a son of Sitz Stellar 726D and the top selling bull in the 2020 Sitz Angus Bull Sale. Profound is docile with thick, deep muscle. His calves carry his look, feet and have lots of vigor and eye-appeal. His PAP score, taken in 2021 after several months breeding at elevations above 6000 ft., was 37.

Reg AAA: 19392993
Sire: Sitz Stellar 726D // MGS: Sitz Upward 9873
CED +3 | BW +.5 | WW +70 | YW +135 | Milk +28



ELLINGSON PREEMINENT

Top selling bull in the 2023 Ellingson Angus production sale. He offers added stoutness, fleshing ability, structural correctness, large scrotal, excellent feet and super quiet disposition. His dam, EA Bells Girl 7617, has earned elite Pathfinder status at a young age, and has produced other top sellers in past Ellingson sales, including the \$80,000 Ellingson Badlands 0285 and the \$85,000 Ellingson Brickhouse.

Reg AAA: 20374007
Sire: Ellingson Profound 8155 // MGS: Koupal Advance 28
CED +5 | BW +4 | WW +87 | YW +147 | Milk +18



KOUPALS B&B CONVICTION 3058

High selling bull at Koupal's B&B spring sale. Very phenotypically correct, standing on excellent feet with added depth of heel. 41cm scrotal. Stacked for fertility and longevity, three maternal generations are ALL top producers in the Koupal's herd. He also has a super quiet disposition. We look forward to infusing his genetics into our breeding program for phenotype, fertility, longevity and disposition.

Reg AAA: 20756233
Sire: Ellingson Proficient // MGS: E G Eyes Onyou
CED +4 | BW +2.9 | WW +83 | YW +135 | Milk +19

Semen Available

HOLLOW TOP — A N G U S —

2024



PRODUCTION SALE

DECEMBER 9, 2024

at the Ranch in Pony, MT

RANCH OFFICE: 406-552-0491
CATTLE OPERATIONS: Chace Iverson 208-365-8862
EMAIL: info@hollowtopangus.com

WWW.HOLLOWTOPANGUS.COM

  @hollowtopangus

Blevins, Craig

See Rafter E Angus, LLC

Blevins, Wayne

See Blevins Angus Ranch

Bobcat Angus

Bryan Ratzburg
265 Bobcat Angus Loop
Galata, MT 59444
bobcatangus@northerntel.net
Bryan (406) 937-5858
Ernie (406) 788-3244
www.BobcatAngus.com
See ad on page 15

Bodner Angus

Ken Bodner
5918 Limestone Canyon Road
Raynesford, MT 59469
bodner@everestkc.net
(406) 735-4417 • (913) 522-4922

Bohle Angus Ranch

Kalyn & Leslie Bohle
PO Box 165
Plevna, MT 59344
bohle@midrivers.com
(406) 772-5898 • (406) 853-5391

Boka, Josh

See Mountainview Insurance

Boyd Angus Ranch, LLC

Ellis & Rhonda Boyd
PO Box 99
Alder, MT 59710
boydangusmt@gmail.com
(406) 842-5645

Boyd's Cottonwood Ranch

Bob Boyd
PO Box 77
Clyde Park, MT 59018
bobboydtkq@gmail.com
(406) 686-4415 • (406) 686-4137

Bradley Livestock LC

Beau & Deb Bradley
PO Box 295
Twin Bridges, MT 59754
kendra@rubyvalleyaviation.com
(406) 684-5939

Braun Creek Angus

Harvey & Lynn Thompson
423 Braun Creek Road
Geysers, MT 59447
(406) 735-4460

Brennan, William

See BB Ranch

Britzman, Dick or John

See Lazy Bar B Ranch

Bromenshenk Farms

Brenda Bromenshenk
4715 Grand Avenue
Billings, MT 59106
b.bromenshenk@bresnan.net
(406) 861-7173

Brooks, Thomas G

See Front Range Cattle LLC

Brown, Colter

See Northern Ag Network

Brubaker, Loren

See Genetic Connection

BTD Ranch, Inc. (Duncan Ranch Co.)

Bruce Duncan
625 2100 Road E
Joplin, MT 59531
btduncan@itstriangle.com
(406) 292-3503
www.DuncanRanch.com

Buckner, Hans & Diana

See Split Diamond Ranch

C**C D Angus**

Doug & Carol Rice
326 Cemetery Road
Park City, MT 59063
dcrice@q.com
(406) 633-2667

C Lazy Y Cattle Co. LLC

Matt Harrison
1420 Highwood Road
Belt, MT 59412
mdharrison02@yahoo.com
(406) 570-6607

C Spear Angus

Bill & Codi Cook
1980 Nth 5th Rd
Huntley, MT 59037
cookbill44@gmail.com
(406) 670-0689
See ad on page 85

Cactus Cattle Company

Bob & Missy Thielen
211 Burnt Station Rd.
Plevna, MT 59344
mt.rancher.27@gmail.com
(406) 772-5811 • (406) 891-5811
www.CactusCattleCo.com
See ad on page 72

Callantine, Jake & Jane, Krista, Cate

See Timber Line Ranch

Campbell, Gerri

See Ballyhoo Printing & Design

Carey Jr., Tom

See XC Ranch Inc.

Carr Angus Ranch

Kyle Carr
Box 184 • Hobson, MT 59452
kyle@carrangus.com • (406) 570-4264
www.CarrAngus.com

Carrel, John

See H C Cattle

Christensen, Shawn & Jennifer

See SpringVale Ranch

Christofferson Farms

Ross Christofferson
PO Box 1540 • Malta, MT 59538
rc516@itstriangle.com
(406) 301-0887

Circle C Angus

Kenneth Clawson
4450 MT Hwy. 200 E • Missoula, MT 59802
(406) 549-9658

Circle L Angus

Cory & Kari Lamey
8525 Hwy 324 • Dillon, MT 59725
circlelangus@yahoo.com
(406) 491-7363
www.CircleLAngus.com
See ad on page 53

Clawson, Kenneth

See Circle C Angus

Clear Creek Angus LLC

Teddy & Sara Crowley
14615 Paradise Valley Rd.
Chinook, MT 59523
ccangus@mtintouch.net
(406) 395-4962 • (406) 399-0403
www.ClearCreekAngus.com
See ad on page 59

Armstrong Angus Ranch

70 Private Treaty Commercial Bred Heifers

Available starting the end of October

December 11, 2024 online bull sale ends

65 Forage developed 18 month bulls

10 hand picked heifer yearling bulls

Join us at ranch for lunch on the 11 for closing bids

Welcome to come look at cattle anytime!



Sires Groups: AAR Renegade 802, S Wrangler, Sitz Mountaineer, MAR Innovation, Granger Black Eagle 822, A&B Capitolist 4507

CHAD & TRISTA ARMSTRONG

Home: 406-287-3212

Cell: 406-224-0586

KYRA ARMSTRONG

cell: 406-565-2750

KLANCY & EMMIE ARMSTRONG

cell: 406-565-0654

"LIKE" OUR PAGE AND FOLLOW US ON FACEBOOK

You are my refuge and my shield: I have put my hope in Your word. Psalm 119:114

Cocergine, Nicolai B.

P. O. Box 4415
Butte, MT 59702
(406) 491-1746

Cole Creek Angus Ranch

Greg Golden
PO Box 94
Joliet, MT 59041
(406) 962-3743 • (406) 839-7588
(406) 694-7254
www.ColeCreekAngusRanch.com
See ad on page 73

Coleman Angus Ranch

Larry Coleman
40067 Morris Road
Charlo, MT 59824
colemanangus@blackfoot.net
(406) 240-2751 • (406) 644-2697
www.ColemanAngus.com
See ad on Back Cover

Considine, Brian

See Black Wave

Cook, Bill & Codi

See C Spear Angus

Cow Capital Livestock, LLC

Doug McLean
43 Signal Butte Road
Miles City, MT 59301
cowcapital61@gmail.com
(406) 853-6961

Crabtree, Tim

See Van Dyke Angus Ranch

Craft, Les

See Les Craft Angus Ranch

Creighton-Smith, Kathy

See ET Cows, Inc.

Cross, Marvin

See Top Notch Angus

Crowley, Teddy & Sara

See Clear Creek Angus LLC

Currant Creek Angus Ranch

Gary & Phyllis Eliasson
PO Box 389
Roundup, MT 59072
ccar@midrivers.com
(406) 323-1024
www.CurrantCreekAngus.com

D**Davis, Jennifer**

See Rollin' Rock Angus

Davis, Karen Harrer

See Windy Ridge Angus

DeBoo, Mark

See Diamond D Angus

DeGrand Angus Ranch

Amanda DeGrand
PO Box 937
Baker, MT 59313
ajdklc@midrivers.com
(406) 775-8861
www.DeGrandAngus.com

Deichmann Livestock Brokerage

Dan Deichmann
PO Box 310
Hobson, MT 59452
deichmannlivestock@gmail.com
(406) 423-5200 • (406) 799-5200

Denowh, Chad or Mick

See Gartner-Denowh Angus Ranch

DH Registered Angus

Dale Hofeldt
6050 Crown Butte Road
Lloyd, MT 59535
(406) 357-3785

Diamond D Angus

Mark DeBoo
18106 Valier Hwy
Valier, MT 59486
dda@3rivers.net
(800) 932-6487
(406) 279-3633 • (406) 799-3480
www.DiamondDAngus.com
See ad on page 41

Doddridge, Paul

See KG Ranch

Double Horseshoe Ranch

Wes Mapston
25500 Hwy. 93
Arlee, MT 59821
(406) 726-3396

Dubs & Family, Louis & Kathy

See Winding River Angus

Duncan, Bruce

See BTD Ranch, Inc. (Duncan Ranch Co.)

Dvorak Angus

Cathy Dvorak
2945 Tyler Creek Road
Lewistown, MT 59457
dvorakcathy@gmail.com
(406) 366-0564

Dye Ranch

Heather Dye
1825 Windham Benchland Rd
Stanford, MT 59479
hdyeranch@hotmail.com
(406) 350-2793

E**Edwards Angus Ranch**

A. Clifford Edwards
1648 Poly Drive, Suite 206
Billings, MT 59102
marlene@edwardslawfirm.org
(406) 256-8155 • (888) 926-2588

Eliasson, Gary & Phyllis

See Currant Creek Angus Ranch

Elkins Angus

Elsmer Kenneth Elkins, Jr.
1828 N Washington Street
Bismarck, ND 58501
kenelkins2010@yahoo.com
(701) 223-3791

Elmose Angus Ranch

Mike & Casey Elmose
18880 Schuringa Lane
Three Forks, MT 59752
in2catl@aol.com
(406) 580-6973
Casey (406) 580-6579

ET Cows, Inc.

Kathy Creighton-Smith
130 Huckleberry Ln.
Florence, MT 59833
etcows@itstriangle.com
(406) 949-2505

F**FBA Ranch****(Fitzsimmons Baltrusch Angus Ranch)**

Casey FitzSimmons • Nathan Baltrusch
PO Box 1744 • Havre, MT 59501
nathan@fbaranch.com
casey@fbaranch.com
(406) 570-8646 • (406) 459-6891
www.FBARanch.com
See ad on page 74

CF

FLESCH ANGUS

JANUARY 24TH, 2025

SHLEBY, MONTANA

OFFERING BULLS & FEMALES

FEATURING PROGENY OF

PROLIFIC
COMMERCE
RISE ABOVE
WINCHESTER
FF CLARITY K8
HA SHOWMAN K128



JEFF FLESCH & FAMILY
970.290.4353 | FLESCHANGUS.COM

Let's Have a Sale!



I welcome the
opportunity to
work with you in
merchandising
your Registered
Angus Cattle!

Joe Goggins
Purebred Auctioneer

4935 Powmer Road
Billings, MT 59105
Cell 406-861-5664
Home 406-373-6844

FF Ranch

Trevor Motichka
46619 Leighton Rd.
Ronan, MT 59864
tmotichka@mwfb.com
(406) 212-5111

Field, Gregory W.

See Tri Mountain Angus

First West Insurance

Aaron Odegard
1905 Stadium Dr.
Bozeman, MT 59715
aaron@fstwest.com
(406) 922-6044
www.1stWestInsurance.com

Fish Creek Ranch

Ronald Rule
440 Starfire Ln.
Alberton, MT 49820
rule438@gmail.com
(505) 681-0810

FitzSimmons, Casey

*See FBA Ranch (Fitzsimmons Baltrusch
Angus Ranch)*

Fleming Stock Farms

Duncan & Cecilie Fleming
Box 1
Granum, Alberta T0L 1A0
flemingangus@xplornet.com
(403) 687-2288 • (403) 625-0427
(403) 625-1124

Foran Angus

Todd Foran
10233 Winifred Hwy 236
Hilger, MT 59451
(406) 462-5663

Foss, Cory & Sarah

See Pleasant Valley Angus

Fredericks, Shawn

See Nueta Cattle Co.

Front Range Cattle LLC

Thomas G Brooks
19 Dear Lane Loop
Vaughn, MT 59487
fronrangecattle@gmail.com
(406) 369-0903

Frosty Creek Angus Ranch

Terry Frost
357 Rehder Road
Roundup, MT 59072
frostangus@midrivers.com
(406) 323-3415
www.FrostyCreekAngus.com

Frye Cattle Company

Ron Frye
PO Box 1363
Three Forks, MT 59752
ronfryemarketing@gmail.com
(406) 600-7514

G

GaLor Angus

Gail Vennes
8393 US Hwy 287
Townsend, MT 59644
glvennes@mt.net
(406) 431-1009

Gardner Angus Ranch

Raymond Gardner
2892 Dovetail Rd.
Winnett, MT 59087
gardner@midrivers.com
(406) 351-9283
www.GardnerAngus.com

Gartner-Denowh Angus Ranch

Chad Denowh
34751 County Road 127
Sidney, MT 59270
chadd@midrivers.com
(406) 798-3541 • (406) 489-1762
www.GDAR-Angus.com
See ad on page 7

Gartner-Denowh Angus Ranch

Mick Denowh
34750 County Road 127
Sidney, MT 59270
gdar@midrivers.com
(406) 489-0172
www.GDAR-Angus.com
See ad on page 7

Gaugler Angus

Mark & Laurie Gaugler
PO Box 195
Judith Gap, MT 59453
mdgaugler@hotmail.com
pgaugler@hotmail.com
(406) 690-1546
www.GauglerAngus.com

Genetic Connection

Loren Brubaker
849 No Way Lane
Stevensville, MT 59870
(406) 777-3503 • (406) 360-1246



MOUNTAINVIEW INSURANCE

FARM & RANCH

WORK COMP - ANIMAL MORTALITY - RAINFALL



Kevin Peterson
Commercial Ag Producer
Kevin@MontanaInsurance.net



Josh Boka
Commercial Ag Producer
Josh@MontanaInsurance.net

PROVIDING TRUSTED RISK MANAGEMENT

406-683-6881 | 202 Willow St | Dillon, MT 59725

Gibbs Angus Ranch

Tim Gibbs
738 Road 130
Fallon, MT 59326
(406) 939-1084

Giem Angus

Gary Giem
82 Giem Lane
Twin Bridges, MT 59754
giem@3rivers.net
(406) 684-5767 • (406) 596-0920

Gnerer Angus Ranch

Joe Gnerer
10 Ash Creek Rd.
Olive, MT 59343
rjgnerer@gmail.com
(406) 498-6113
www.GnererAngus.com

Goggins Family

See Vermilion Ranch

Goggins, Joe & Linda

See MT Angus Female Bonanza

Goggins, John

See Western Ag Reporter

Golden, Greg

See Cole Creek Angus Ranch

Gollaher Ranch Company

Ted & Delight Gollaher
3112 Cascade Hound Creek Road
Cascade, MT 59421
(406) 468-2273
www.GollaherRanch.com

Graham, Les

See MT Association of Livestock Auctions

Granger Angus

Jim Granger
1929 Eden Road
Great Falls, MT 59405
blackcow@3rivers.net
(406) 736-5588 • (406) 868-1176
www.GrangerAngus.com

Gravenhof, Stacey & Michelle

See West Wind Angus Ranch

Green Mountain Angus Ranch

Tim Todd
35 Green Mountain Dr.
Ryegate, MT 59074
gmar@midrivers.com
(406) 220-1975 • (406) 568-2768
www.GreenMountainAngus.com
See ad on page 1

Green Ranch

Larry Green
RTE 1, Box 1051B
Hardin, MT 59034
larrydgreen@icloud.
(406) 679-1863

Griffin Land and Cattle Co LLC

Andrea Pearson
PO Box 2137
Billings, MT 59103
www.GriffinLandAndCattle.com

H**H C Cattle**

John Carrel
4439 Hwy 78
Columbus, MT 59019
lauriecarrel@live.com
(406) 855-2832
www.PineCoulee.com
See ad on page 69

Hachigian-Gould, Aimee

See 7 Bar Heart Registered Angus

Hanson, Bernie

See Better Fed Foods

Harmon Angus Ranch

Steve & JoAnn Harmon
76 Harmon Rd
Lavina, MT 59046
harmonangus@gmail.com
(406) 636-4754
www.HarmonAngus.com

Harrer, Bill

3000 11th Ave S, Apt 118
Great Falls, MT 59405
(406) 771-8229

Harrison, Matt

See C Lazy Y Cattle Co. LLC

Hawley Ranch

Wade Hawley
2790 Erickson Road
Conrad, MT 59425
hawleyranch39@gmail.com
(406) 590-5569
www.HRMineralOwnerConsulting.com

Heart S Livestock Marketing, LLC

Fred & Jennifer Saunders
PO Box 117
Grass Range, MT 59032
fredsaunders9@gmail.com
(406) 428-2334 • (406) 798-9331

Heide Angus Ranch

John & Nancy Heide
59 Upper Valley Road
Boulder, MT 59632
(406) 225-3640 • (406) 439-7129

Heiken Angus

Brian Heiken
15646 Buffalo Trail
Broadview, MT 59015
heikenangus@aol.com
(406) 861-3151
www.JCHeikenAngusandSons.com
See ad on page 9

Heiken, John

See JC Heiken Angus & Sons

Heiken, John & Kendra

See J & K Heiken Angus

High Meadows

Goz Segars
349 Rehder Rd.
Roundup, MT 59072
goz@segarsrealty.com
(843) 332-2537

Hildebrand, Lynn & Jan

See Prairie Angus LLC

Hilltop Angus Ranch

Cory Poser
1831 Everson Road
Denton, MT 59430
htangus@itstriangle.com
(406) 366-3461
www.hilltopangus.com
See ad on page 79

Hilltop Angus Ranch

Gary Poser
1831 Everson Road
Denton, MT 59430
htangus@itstriangle.com
(406) 366-3461
www.hilltopangus.com
See ad on page 79

Hinman Angus

Dave & Yvonne Hinman
PO Box 220
Malta, MT 59538
hinmanangus@hotmail.com
(406) 654-1809 • (406) 654-4656
www.HinmanAngus.com
See ad on page 23

Hofeldt, Dale

See DH Registered Angus



Angus with Altitude



ANNUAL PRODUCTION SALE

Monday

FEBRUARY 24, 2025

150 YEARLING & LONG YEARLING BULLS

1:00 PM • DILLON, MONTANA
DILLON LIVESTOCK AUCTION

REFERENCE SIRES

WXW Timberline

AAR Essential

LAR Man in Black

GB Fireball

Circle L Centennial

Sitz Incentive

Circle L Silverbow

Kraye Big Country

Basin Safe Deposit



CORY & KARI LAMEY

8525 MT Hwy 324 • Dillon, MT 59725
circlelangus@yahoo.com • 406-491-7363



CIRCLELANGUS.COM

Hoffman Angus Co.
Brad Hoffman
PO Box 130
Custer, MT 59024
hoffman@midrivers.com
(406) 671-7451

Hoines, Chris
See Rock Creek Ranch Ltd. Partnership

Hollow Top Angus
Porter Bennett
PO Box 456
Ennis, MT 59729
info@hollowtopangus.com
(303) 513-9058
Clay Clarke (406) 223-5078
www.HollowTopAngus.com
See ad on page 44-45

Horse Butte Ranch
Dennis & Erica Voss
Po Box 297
Two Dot, MT 59085
hbr@mtintouch.net
(406) 632-4251
www.HorseButteRanch.com

Hould, Bruce
See B & L Farm & Ranch LLP

Houtzel, Royce
See Milk River Genetics

Humbert Angus
Lee Humbert
332 Halverson Road
Scobey, MT 59263
2leehumb@nemont.net
(406) 783-5341

Hunt Creek Angus
Lowell Peterson
244 N. Silver Tip Road
Bridger, MT 59014
huntcreekangus@gmail.com
(406) 425-2006

I

Indreland Angus
Roger & Betsy Indreland
170 Glasston Road
Big Timber, MT 59011
iaranch@itstriangle.com
(406) 932-4232 • (406) 930-0386
(406) 930-0671
www.IndrelandRanch.com
See ad on page 43

Infinity Angus Ranch
Edwin Miner
211 Prairie Dell Road
Peerless, MT 59253
infinityangus@nemont.net
(406) 893-7788
www.InfinityAngus.com

J

J & K Heiken Angus
John & Kendra Heiken
P.O.Box 32 • Broadview, MT 59015
jcheikenangus@gmail.com
(406) 855-7839
www.JCheikenAndSons.com
See ad on page 9

J L Farms Inc.
Darryl & Kari Wagner
3752 Little Creek Lane, RR 9
Billings, MT 59101
jl.wags@hotmail.com
(406) 628-3534 • (406) 670-9619

J.P. Genetics
Gary Porter
3360 Heeb Rd. • Manhattan, MT 59741
(406) 282-7487

Jacobs, Roger & Sandy
See Summit Angus Ranch

JC Heiken Angus & Sons
John Heiken
PO Box 32
Broadview, MT 59015
jkheiken@itstriangle.com
Joe (406) 861-1020
John (406) 855-7839
www.JCheikenAngusAndSons.com
See ad on page 9

Jensen, Bill
See Black Pine Farm

Jocko Valley Cattle
Marvin Rehbein
32526 McLeod Road
Arlee, MT 59821
cabordner@riversidecontracting.com
(406) 726-3839 • (406) 546-4687
www.JockoValleyCattle.com

Johnson, Ben or Karli
See Sevens Livestock Co.

Johnson, Leisa & Brady
See Basin Angus

Jones Creek Ranch
Casey Kombol
PO Box 818
Roundup, MT 59072-0818
jones_creek_ranch@hotmail.com
(406) 331-0696

K

KEL MCC Angus
Kelly McCracken
32215 Hogeland Rd.
Turner, MT 59542
kelmccan@itstriangle.com
(406) 262-2347

Keller, Mark & Lynn
See MLK Angus

KG Ranch
Paul Doddridge
110 KG Ranch Road
Three Forks, MT 59752
paul@kgranch.com
(406) 285-3660
www.KGRanch.com
See ad on page 37

Kiker, John
See Montana Angus Ranch

Kimm Angus
Tom Kimm
8620 Highline Road
Manhattan, MT 59741
tdkimm@gmail.com
Riley Kimm (406) 580-6172
(406) 209-2653

Kirby, Mike
See Shooting Arrow Cattle

Klick Angus
Todd Klick
PO Box 176
Simms, MT 59477
jtklick@icloud.com
(406) 899-5806

Kolb Angus Ranch
Ron Kolb
29 Kolb Road
Hysham, MT 59038
gandr13@gmail.com
(406) 855-3259

Kombol, Casey
See Jones Creek Ranch

SKINNER RANCH SEEDSTOCK



Bar-E-L Chief 81K



Sons out of these sires
sell at our
38th Annual Bull Sale
February 28, 2025



SRS Honest 3136H



SRS Keynote 1047K



Get in Touch

Ron & Bev Skinner and Sons Hall, MT 59837
(406) 581-1852 skinnerranch@hotmail.com
www.skinnerranch.com

Our Ranch Mission

Balancing traits for four decades emphasizing real world cattle with convenience traits:
good feet & legs, udder quality, tight sheath, and good disposition

Krantz Angus

Clark Krantz
835 Fairmont Road
Kalispell, MT 59901
3kidfarm@centurytel.net
Clark (406) 250-1081
Carter (406) 212-5499

Krein, Larry

See L K Bar Angus Ranch

L**L K Bar Angus Ranch**

Larry Krein
36351 Dublin Gulch Road
St. Ignatius, MT 59865
chr2801@blackfoot.net
(406) 253-5692

Lamey, Cory & Kari

See Circle L Angus

Larsen Ranch

Tyler Larsen
249 Rosebud Creek Road
Forsyth, MT 59327
larsenranch@rangeweb.net
(406) 351-1412 • Lafe (406) 351-9828
www.LarsenRanch.com

Laverdure Livestock

Andee Peterson
PO Box 446
Cut Bank, MT 59427
andreebrook@gmail.com
(406) 945-2717
www.PetersonGrainAndCattle.com
See ad on page 19

Lawson, Ben

3955 Evelyn Ave.
Rocklin, CA 95677
bovagene@msn.com
(307) 340-0488
www.bovagene.com

Lazy Bar B Ranch

Dick or John Britzman
PO Box 52
Glasgow, MT 59230
richardbritzman@yahoo.com
(406) 263-7522
John (406) 263-1147

Lazy JM Ranch

Kurt McPherson
35625 Hawkins Road
St. Ignatius, MT 59865
flint@blackfoot.net
(406) 239-7640

Leachman Angus Ranch

Marlo Leachman
202 Muddy Lane Road
Toston, MT 59643
leachman@mt.net
(406) 581-0531
www.LeachmanAngus.com

Lee, Cody

See Never Sweat Ranch

Les Craft Angus Ranch

Les Craft
981 Shane Creek Rd.
Columbus, MT 59019
craft.y@comcast.net
(406) 322-6158 • (219) 716-6624

Lesnik Angus

John Lesnik
696 Nye Rd.
Fishtail, MT 59028
j-lesnik@hotmail.com
(406) 925-3968

Lippert Grain & Cattle

Alan Lippert
4306 Chimney Rock Road
Fort Benton, MT 59442
(406) 734-5465

LJ Angus

Jeff & Laurie Mosher Family
6410 Frey Road
Shepherd, MT 59079
(406) 373-5961

Lori Peterson, Wendy Olson &

See Stein Angus

Louie Petrie Ranch

Sam & Linda Obrecht Tyrel & Lindsey
Obrecht
PO Box 77 • Turner, MT 59542
samobrecht82@gmail.com
(406) 379-2392

Lund, JR & Katie

See Rockin L Genetics

Lund's B Bar Angus Ranch

Steve Lund
491 E. Carlyle Road
Wibaux, MT 59353
lundbbar@midrivers.com
(406) 588-3631
www.LundsBBarAngus.com
See ad on page 70

M**M & M Angus Ranch**

Jeff Michael
3731 Pioneer Road
Billings, MT 59105
mandmangusranch@gmail.com
(406) 670-7964

Malcolm Mile-Hi Ranch

Asha Malcolm
28 Cokedale Rd. • Livingston, MT 59047
malcolmmilehiranch@gmail.com
(406) 223-1657

Malcolm, Will & Sabrina

See Sleeping Giant Genetics

Malek Angus Ranch

Ty & Tami Malek
22700 Highwood Road
Highwood, MT 59450
malekangusranch406@gmail.com
(406) 899-4300
www.BigSkyMontanaBeef.com

Maloney Angus & Simental

Garrett or Gavin Maloney
P.O. Box 24
Turner, MT 59542
masranch@outlook.com
(406) 654-7115
www.MaloneyAngusSimmental.com

Mapston, Wes

See Double Horseshoe Ranch

Mason, Doug & Jody

See North Bench Livestock

Master Angus

Gene Ryg
PO Box 98
Chinook, MT 59523
generyg@gmail.com
(406) 357-7734
www.MasterAngus.com

Math Farms Angus

Robert & Cody Math
11096 N Forks Road
Whitewater, MT 59544
rmathfarms@yahoo.com
math5@itstriangle.com
(406) 674-5562 • (406) 672-2323
(406) 671-1949
www.MathFarms.com
See ad on page 81

Selling Sons of

B A R Dynamic
Connealy Craftsman
Deer Valley Growth Fund
LAR Man in Black
Mead Magnitude
MMP Right Kind
Poss Winchester
Raven Republic
Woodhill Reality

CATTLE

Same Great Genetics / Same Great People / One Brand

14th Annual Angus Bull Sale

March 1, 2025

SUTHERLIN FARMS FEEDLOT • STEVENSVILLE, MT
Sale begins at 1PM Mountain Time • Lunch served at Noon

Selling 45+ Yearling Angus Bulls

50+ Fancy No Brand Commercial Angus Heifers



WWW.3CCATTLELLC.COM



406/ 360-1875

Chad, Lacey & Cayden Sutherlin
Chad 406-360-1875
Lacey 406-544-0043

406/ 207-9176

Cody, Mindy, Tripp & Jett Sutherlin

406/ 360-1246

Loren Brubaker
Loren 406-360-1246

McCracken, Kelly

See *KEL MCC Angus*

McDonnell Angus Beef Country Genetics

Leo & Sam McDonnell
70 Sheep Dip Rd.
Columbus, MT 59019
leomcd@hotmail.com
(406) 780-0176 • (406) 321-0655
www.McDonnellBeefCountry.com

McDonough Angus Ranch

Rob McDonough
5545 Lewis & Clark Pass Road
Wolf Creek, MT 59648
rmcdona628@yahoo.com
(406) 235-4428

McFadgen Angus

Kathy McFadgen
3024 Bugli Lane
Stevensville, MT 59870
mcfadgenmark@hotmail.com
(406) 531-2301 • (406) 360-8701

McKamey Ranch Co.

Ken McKamey
1909 Millegan Road
Great Falls, MT 59405
kpmck.mt@gmail.com
(406) 866-3471

McKay, Richard

See *4K Livestock Ent. LLC*

McLean, Doug

See *Cow Capital Livestock, LLC*

McPherson, Kurt

See *Lazy JM Ranch*

McRae, Brent and Jack

See *Big Dry Angus Ranch*

Medicine Rocks Ranch

Frank & Charlene Mehling
1021 Hwy. 7
Baker, MT 59313
medicine_rocks_ranch@hotmail.com
(406) 775-6478
www.MedicineRocksRanch.com

Meged, Haven

696 Tongue River Rd.
Miles City, MT 59301
(406) 951-3004

Mehling, Frank & Charlene

See *Medicine Rocks Ranch*

Menghini Angus Ranch

Duane & Shirley Menghini
116 Holmberg Road
Belt, MT 59412
menghini@3rivers.net
(406) 788-1671 • (406) 736-5279

Michael Angus Ranch

John & Lynn Michael
35 Chicken Creek Road
Livingston, MT 59047
lynncmichael@yahoo.com
(406) 686-4430 • (406) 220-5997

Michael, Jeff

See *M & M Angus Ranch*

Michael, John & Lynn

See *Michael Angus Ranch*

Middlemist Cattle

Kyle Middlemist
38731 Green Mountain Road
Polson, MT 59860
kylemiddlemist@gmail.com
(406) 396-4282

Midland Bull Test

Williams & McDonnell families
5 Bull Drive • Columbus, MT 59019
bulls@midlandbulltest.com
(406) 322-5597
www.MidlandBullTest.com
See ad on page 77

Milk River Genetics

Royce Houtzel
13765 Peoples Creek Rd.
Chinook, MT 59523
mrg@itstriangle.com
(406) 945-3261
www.MilkRiverGenetics.com

Millar, Jim

See *Sarpy Creek Angus Ranch*

Miner, Edwin

See *Infinity Angus Ranch*

Miske Ranch Angus

Robert Miske
PO Box 59 • Wibaux, MT 59353
mrangus@midrivers.com
(406) 796-8102 • (701) 218-0441

MLK Angus

Mark & Lynn Keller
2828 Lincoln Road E
Helena, MT 59602
mlkangus@outlook.com
(406) 431-0872 • (406) 465-8195
www.MLKAngus.net

Montana Angus Association

Jesse Thompson, Executive Admin.
PO Box 25
Whitlash, MT 59545
montanaangusnews@mtangus.org
(406) 450-3429
www.MTAngus.org

Montana Angus Ranch

John Kiker
855 Abutment Rd., Suite 5
Dalton, GA 30721
johnkiker@optilink.us
(706) 259-5627 • (706) 264-0433

Montana Grafix, LLC

Hannah Norskog
PO Box 544
Stanford, MT 59479
hannah@montanagrafix.com
(406) 399-7763
www.MontanaGrafix.com
See ad on page 72

Mosher Family, Jeff & Laurie

See *LJ Angus*

Motichka, Trevor

See *FF Ranch*

Mountainview Insurance

Kevin Peterson • Josh Boka
202 Willow Street
Dillon, MT 59725
kevin@montanainsurance.net
josh@montanainsurance.net
(406) 683-6881
www.MontanaInsurance.net
See ad on page 51

MT Angus Female Bonanza

Joe & Linda Goggins
4935 Powmer Road
Billings, MT 59105
(406) 373-6844 • (406) 861-5664
See ad on page 50

MT Association of Livestock Auctions

Les Graham
56 Poplar Drive
Bozeman, MT 59718
ldgraham74@gmail.com
(406) 580-2919

Murphy Angus LLC

Brad J. Murphy
PO Box 55
Winnett, MT 59087
bmurphyangus@gmail.com
(406) 539-7041



17TH ANNUAL PRODUCTION SALE MARCH 3RD 2025

BEAR PAW LIVESTOCK, CHINOOK, MONTANA

Clear Creek Angus

With Special Guests Weaver Herefords

75 ANGUS YEARLING BULLS | 15 HEREFORD YEARLING BULLS & F1 BALDY REPLACEMENT HEIFERS

Featuring Sons of



GENEX



Sitz Spectrum

AAA# 19905840

Musgrave 316 Exclusive

AAA# 18130471

Sterling Pacific 904

AAA#19444025

CED +9 | BW +.6 | WW +78 | YW +136
SC +1.18 | M +28 | Marb +.63 | RE +.92
\$B +185 | \$C +307

CED +8 | BW +.9 | WW +67 | YW +121
SC +.97 | M +27 | Marb +.84 | RE +.54
\$B +173 | \$C +300

CED +7 | BW +2.2 | WW +79 | YW +144
SC +1.06 | M +13 | Doc +30
\$B +195 | \$C +308



Introducing
Jr. Herdsire

Vermilion Leo L045

AAA#20651490

CED +10 | BW -0.4

WW +79 | YW +137 | SC +.89

M +32 | Marb +.91 | RE +.84

\$M +90 | \$B +169 | \$C +309

Call to get on the list for Semen for
fall of 2024 or spring of 2025!
Semen \$30 Certificates \$35

DVAuction
Broadcasting Real-Time Auctions

Bred Heifers available Fall of 2024 by Private Treaty

Clear Creek Angus Teddy & Sara Crowley
Teddy's Cell (406) 399-0403
CCAngus@ltsTriangle.com
clearcreekangus.com

Weaver Herefords Don & Dolly Weaver
Home (406) 386-2244 | Don (406) 399-1556
weaverherefords.com

Murray, Chase

See *Universal Semen Sales*

Mussard, Bryan

See *Reminisce Angus Ranch*

Mydland Angus Ranch

Danny & Corie Mydland
645 Farewell
Joliet, MT 59041
dcmlydland@aol.com
(406) 962-3404
www.MydlandAngus.com

N**Neal Ranch**

Lyle & Dianna Neal
10981 Hwy 451
Lodge Grass, MT 59050
neal@nemont.net
(406) 639-2505 • (406) 679-1976
(307) 752-4419

Never Sweat Ranch

Cody Lee
1025 Hwy. 93 S
Hamilton, MT 59840
codyleeus@yahoo.com
(406) 370-7623
www.NeverSweatRanch.com

NILE Stock Show & Pro Rodeo

David Allen
PO Box 1981
Billings, MT 59103
david@thenile.org
(406) 256-2498
www.TheNile.org

Nissen Angus

Jeff & Christie Nissen
14615 Paradise Valley Rd
Chinook, MT 59523
info@nissenangus.com
(406) 357-2643
www.NissenAngus.com

Norskog, Hannah

See *Montana Graftix, LLC*

North Bench Livestock

Doug & Jody Mason
153 E Fossum Rd
Richland, MT 59260
northbenchlivestock@gmail.com
(406) 724-3322 • (406) 853-5130
(406) 853-5130
www.NorthBenchLivestock.com

Northern Ag Network

Colter Brown
PO Box 1742
Billings, MT 59103
colter@northernbroadcasting.com
(406) 252-6661
www.NorthernAg.net
See ad on page 24-25

Nueta Cattle Co.

Shawn Fredericks
HC 42; Box 692
Busby, MT 59016
nuetacattle@outlook.com
(406) 679-0013
www.NuetaCattle.com

O**O'Connor, Harrison**

See *Saddle Butte Ranch*

OA Angus

Pete Olind
368 Shining Mtns. Loop Road
Ennis, MT 59729
oaangus@hotmail.com
(406) 682-3304 • (406) 548-5326

**Obrecht, Tyrel & Lindsey,
Obrecht, Sam & Linda**

See *Louie Petrie Ranch*

Odegard, Aaron

See *First West Insurance*

Olind, Pete

See *OA Angus*

Orem, Marc

See *Ox Bow Ranch*

ORIGen Inc.

Dick Beck
10 West Arrow Creek Road
Huntley, MT 59037
(406) 348-2345
www.ORIGenbeef.org

Ostrum, Chase

See *2 Bar Livestock*

Ox Bow Ranch

Marc Orem
PO Box 215
Wolf Creek, MT 59648
oxbow1725@gmail.com
(406) 235-4281
www.OxBowRanchAngus.com
See ad on page 61

P**Pass Creek Angus Ranch**

Darrell Rathkamp
PO Box 148
Wyola, MT 59089
passcreekangus@hotmail.com
(406) 343-2551
www.PassCreekAngus.com

Patterson, John

See *3210 Angus*

Pearson, Andrea

See *Griffin Land and Cattle Co LLC*

Perry, Ryan & Karnell

See *R K Perry*

Perry, Ryan & Karnell

See *Treasure Bull Test*

Peterson Angus

Randy & Sue Peterson
PO Box 427
Drummond, MT 59832
speterson5897@gmail.com
(406) 240-5897

Peterson, Kevin

See *Mountainview Insurance*

Peterson Grain & Cattle

Casey & Chancin Solomon
18211 Road 325 N
Havre, MT 59501
pgc@itstriangle.com
(406) 945-1355
www.PetersonGrainAndCattle.com
See ad on page 19

Peterson Grain & Cattle, Inc.

Kim Peterson
18211 Road 325 N • Havre, MT 59501
pgc@itstriangle.com • (406) 945-0544
www.PetersonGrainAndCattle.com
See ad on page 19

Peterson, Andee

See *Laverdure Livestock*

Peterson, Jay & Lea

See *Six Diamond Angus*

Peterson, Kim

See *Peterson Grain & Cattle, Inc.*

Peterson, Lowell

See *Hunt Creek Angus*

SELLING 100 HEAD OF YEARLINGS + 2 YEAR OLD BULLS

ALL BULLS ARE FREEZE BRANDED, BVO TESTED & BREEDING SOUNDNESS/FERTILITY EXAM

FULL CALENDAR YEAR GUARANTEE

OX BOW RANCH

OX BOW RANCH SPRING SALE

WEDNESDAY | MARCH 5TH 2025 | 1:00 PM

AT THE RANCH IN WOLF CREEK, MONTANA - LUNCH AT NOON

BULLS ARE RAISED IN A RUGGED, STEEP ENVIRONMENT
WITHOUT CREEP, IRRIGATED PASTURES AND FOOT TRIMMING

Performing from Montana and the Dakotas, to the Great Basin & the Mexican Border



OXBOWRANCHANGUS.COM

Peterson, Randy & Sue
See Peterson Angus

Piazzola Angus Ranch
Jerry Piazzola
498 Basin Creek Road
Butte, MT 59701
Jerry.Piazzola@gmail.com
(406) 310-0151

Pike, Kent & Judy
See 4 Butte Cattle Co.

Pine Coulee Angus
Jim & Andrea Stampfel
PO Box 772
Absarokee, MT 59001
pinecoulee@outlook.com
(406) 780-1230
www.PineCoulee.com
See ad on page 69

Pleasant Valley Angus
Cory & Sarah Foss
12405 County Rd 343
Sidney, MT 59270
csfoss@hotmail.com
(406) 489-0809

Pike, Bryan
30 Heron Bank Rd.
Great Falls, MT 59404
bpik@hotmail.com
(406) 788-5952

Popescu Angus
George Popescu
PO Box 1508
Fort Benton, MT 59442
(406) 564-2482

Porter, Gary
See J.P. Genetics

Poser, Cory
See Hilltop Angus Ranch

Poser, Gary
See Hilltop Angus Ranch

Prairie Angus LLC
Lynn & Jan Hildebrand
420 N. Silvertip Road • Bridger, MT 59014
(406) 664-3221 • (406) 860-3978
(406) 860-0022

R

R K Perry
Ryan & Karnell Perry
P.O. Box 1 • Power, MT 59468
rkperry@icloud.com
(406) 788-9869

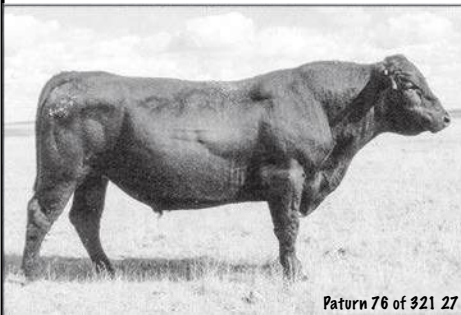
Rafter E Angus, LLC
Craig Blevins
P.O. Box 735
Ronan, MT 59864
raftereangus@gmail.com
(406) 207-8339 • Craig (406) 207-8339

*Because I have to pay for land selling calves, I have to be a low input, least cost producer focused on profit.
That means smaller cows, more of them, producing more pounds per acre, sold at a higher price per pound.
Smaller pastures, grazing longer, feeding less. Calving later with more live calves, fewer cull cows, fewer replacements
And it means using my own bulls.*

TURNER ANGUS

**Raising Line Bred, Low Input,
No Maintenance, Hands Free,
Grass Cattle**

Common Sense Cattle Designed to Work for a Living



Patern 76 of 321 27



Patern 810 of 321 422



Patern 57 of 321 711

See the Herd at
www.TurnerAngus.com
Paul D. Turner PO Box 145 Shelby, MT 59474 (406)337-3800

SPLIT DIAMOND BULLS



ALWAYS A LASTING VALUE

SITZ LOGO 8148

AAA #19087441



Top 10%
WW, CLAW
Top 15% PAP, YW



34th Annual ANGUS BULL SALE

MARCH 6TH, 2025
1:00 P.M. MST • DILLON, MT
DILLON LIVESTOCK AUCTION

Our Bull Sale will feature sons from these top Angus sires....

EZAR STEP UP 9178 | SITZ RESILIENT 10208 | SD FINAL ANSWER 5081

First Sons to Sell from

SITZ ROYALTY 1299

AAA #20117643



Calving Ease
with Great
Feet & PAP!

SITZ THRESHOLD 9901

AAA #20043616



Great Footed!
Explosive Growth!
Moderate Calving
Ease!

SEMEN AVAILABLE ON LOGO, THRESHOLD, & ROYALTY!

Steve & Linda Buckner | 406-498-3005 | steve@splitdiamond.com
Hans & Diana Buckner | 406-581-0612 | hans@splitdiamond.com



PAP Tested <=> Fertility Tested <=> Maternally Minded <=> Range Functional <=> Easier Calving

Rathkamp, Darrell
See Pass Creek Angus Ranch

Ratzburg, Bryan
See Bobcat Angus

Ravellette Cattle
Don Ravellette
PO Box 633
Phillip, SD 57567
don@pioneer-review.com
(605) 685-5147

Reddin Angus
Jake or Kris Reddin
3096 Old Darby Road
Darby, MT 59829
kjreddin@cybernet1.com
(406) 821-4442

Rehbein, Marvin
See Jocko Valley Cattle

Reisig Cattle
David Reisig
PO Box 30
Hardin, MT 59034
dustin@reisigcattle.com
(406) 350-1800
www.ReisigCattle.com

Reisig Cattle
Dustin & Rebecca Reisig
619 NE Main Street
Lewistown, MT 59457
(406) 538-5731 • (406) 350-1800
www.ReisigCattle.com

Reminisce Angus Ranch
Bryan Mussard
6101 Sweetwater Road
Dillon, MT 59725
bryanmussard406@gmail.com
(406) 925-1416
www.RemAngus.com
See ad on page 2, 65

Reyher Embryonics
Mark & Jeanne Reyher
7195 Thorpe Road
Belgrade, MT 59714
reyherembryonics@aol.com
(406) 580-3490
See ad on page 18

Rice Ranches, Inc.
Diane Rice
PO Box 216
Harrison, MT 59735
info@riceranches.com
(406) 685-3468 • (406) 580-1447
www.RiceRanches.com

Rice, Doug & Carol
See C D Angus

Rice, Greg & Karen
See Spanish Q Inc.

Rock Creek Ranch Ltd. Partnership
Chris Hoines
5112 Diamond Falls Rd
Billings, MT 59106
choinesse@paynewest.com
(406) 672-1987

Rockin L Genetics
JR & Katie Lund
PO Box 42
Winnett, MT 59087
rockinLgenetics@hotmail.com,
lundangus@hotmail.com
(406) 350-1059 • (406) 951-0212

Rollin' Rock Angus
Jennifer Davis
7111 Sherman Dr
Belgrade, MT 59714
rolnrokddavis@gmail.com
(406) 489-2609
www.RollinRockAngus.com

Rule, Ronald
See Fish Creek Ranch

Ryg, Gene
See Master Angus

S

Saddle Butte Ranch
Harrison O'Connor
2704 Cottonwood Creek Road
Geyser, MT 59447
saddleb@3rivers.net
(406) 735-4400
www.SaddleButteRanch.com
See ad on page 80

Sand Rock Angus
Bob Smith
222 Sand Rock Rd.
Broadus, MT 59317
bsmith@sandrockangus.com
(406) 427-5745 • (406) 853-0363
www.SandRockAngus.com

Sarpy Creek Angus Ranch
Jim Millar
697 Sarpy Basin
Hysham, MT 59038
sarpycreekangus@gmail.com
(406) 342-5813

Sattoriva, David
See Whistling Winds Angus, Inc.

Saunders, Fred & Jennifer
See Heart S Livestock Marketing, LLC

Segars, Goz
See High Meadows

Sevens Livestock Co.
Ben or Karli Johnson
PO Box 456
Choteau, MT 59422
sevenslivestock@gmail.com
(406) 480-2953

Severson's Flying E Ranch
Dan & Gene Severson
760 S. Burnt Fork Road
Stevensville, MT 59870
lee@familypharmacist.com
(406) 777-3576 • (406) 777-3313
www.SeversonsFlyingE.com

Shipwheel Cattle Co.
Klint & Lori Swanson
2265 Gooseberry Lane
Chinook, MT 59523-9005
lori@shipwheelcattle.com
(406) 357-2492 • (406) 399-2962
www.ShipwheelCattle.com
See ad on page 11

Shooting Arrow Cattle
Mike Kirby
PO Box 117
Stanford, MT 59479
(406) 566-2563

Sitz Angus Ranch
Bob Sitz
PO Box 129
Harrison, MT 59735
sitzangus@3rivers.net
(406) 685-3360 • (406) 683-5277
www.SitzAngus.com
See ad on page 5

Sitz Angus Ranch
Jim & Tammi Sitz
9100 US Hwy 91 N
Dillon, MT 59725
sitzangus@gmail.com
(406) 683-5277
www.SitzAngus.com
See ad on page 5

Six Diamond Angus
Jay & Lea Peterson
PO Box 907
Sheridan, MT 59749
jaynlea@3rivers.net
(406) 842-7214



Customer Service- Providing health, feedlot and grid performance data for our customers for over 25 years.

Reminisce Cows- Cow herd performance starts with measuring structural soundness and disposition. If these 2 traits aren't in order, it doesn't matter how fertile she is or how big of calf she can raise.

Reminisce Bulls- Born and raised in altitudes above 7,000.' Developed on a 41 mega cal ration; Summered in big sage brush pastures to learn to travel in big country.

How Good are Your Cattle?

Bragging rights on performance begin and end on the rail. On that day you will know how healthy they were, how well they gained, how well they converted, and how well they will taste to a consumer that doesn't know you. We all sell our cattle by the pound and on that day you will be paid accordingly. Do you know how good your cattle are? Reminisce Angus customers do. They have the data. They have the bragging rights.

RM Big Easy 0585 FJB



40 Sons Sell!

AAA# 20147206	DOB: 05/30/2020					
CED	BW	WW	YW	M	MB	RE
+11	-0.2	+47	+89	+26	+85	+40

RM McLendon 9599



25 Sons Sell!

AAA# 19793942	DOB: 06/01/2019					
CED	BW	WW	YW	M	MB	RE
+12	-2.2	+24	+35	+14	+48	+42

RM Scottsman 9625



30 Sons Sell!

AAA# 19793944	DOB: 06/04/2019					
CED	BW	WW	YW	M	MB	RE
-5	+1.3	+38	+63	+17	+83	+34

RM Dunlop 9609



20 Sons Sell!

AAA# 19793855	DOB: 06/02/2019					
CED	BW	WW	YW	M	MB	RE
+4	+1.5	+37	+54	+13	+70	+97

Annual Bull Sale

MARCH 7, 2025

1:00 PM at the Big West Feeding Facility, Dillon, Mont.

165 Head Sell

BRYAN & MARCIA MUSSARD

6101 Sweetwater Rd. Dillon, MT • 406-925-1416 • 406-683-6363 • bryanmussard406@gmail.com

www.RemAngus.com

Skinner Ranch Seedstock

Kim & Tim Skinner
162 Farm to Market Rd. W.
Hall, MT 59837
skinnerranch@hotmail.com
Kim (406) 581-1852
Tim (406) 581-6224
www.SkinnerRanch.com

See ad on page 55

Skogen GK Angus Ranch

Orville & Arlene Skogen
PO Box 158
Fort Shaw, MT 59443
skogenvivestock@hotmail.com
(406) 264-5298 or (406) 264-5270
(406) 264-5270

Sleeping Giant Genetics

Will & Sabrina Malcolm
28 Cokedale Road
Livingston, MT 59047
sleepinggiantgenetics@gmail.com
(406) 223-2234

Smith, Bob

See Sand Rock Angus

Smith, Spencer

See Spencer Smith Farms

Solomon, Casey & Chancin

See Peterson Grain & Cattle

Spanish Q Inc.

Greg & Karen Rice
PO Box 1530
Ennis, MT 59729
spanishq@3rivers.net
(406) 682-3661 • (406) 580-2493

Spencer Smith Farms

Spencer Smith
5155 High Street
Belgrade, MT 59714
(406) 284-6864

Spickard, Scott

See World West Sire Services Inc.

Split Diamond Ranch

Hans & Diana Buckner
53 Ridder Lane
Whitehall, MT 59759
hans@splitdiamond.com
(406) 581-0612
www.SplitDiamond.com
See ad on page 63

SpringVale Ranch

Shawn & Jennifer Christensen
56835 Little Bitterroot Road
Hot Springs, MT 59845
springvale@hotspringsmt.net
(406) 741-2519

Stampfel, Jim & Andrea

See Pine Coulee Angus

Stein Angus

Wendy Olson & Lori Peterson
140 Heath Park Lane • Lewistown, MT 59457
kdbylori@gmail.com
(406) 538-9615 • (406) 745-2782

Stevenson Angus Ranch

Bob & Robin Stevenson
PO Box 292
Hobson, MT 59452
bobandrobinstevenson@hotmail.com
(406) 350-5453
www.StevensonAngus.com
See ad on page 21

Winding River

ANGUS

Private Treaty Opening Day Sale

Saturday, March 15, 2025

Bridger, MT, 4 miles south on Hwy 72

SIRES REPRESENTED

*Man in Black
Saluda
Regiment
Brigade
Republic
Statesman
Exponential
Armstrong*

**LOOK FOR OUR BULLS AT
MIDLAND BULL TEST!**

**FEMALES FOR SALE
PRIVATE TREATY!**

LOUIS & KATHY DUBS & FAMILY

4910 Custer • Billings, MT 59106 • www.WindingRiverAngus.com
(406) 652-7515 • (406) 208-8643 • windingriverangus@gmail.com

Featured Sires

TH Legacy

Sitz Resilient 10208

Heiken Incentive 2030

Ellingson Badlands 0285

Pine Coulee Resource G708



**Maternally Driven
Genetics**



7th Annual Production Sale

Saturday • March 8, 2025

1 pm | Headwaters Livestock Auction Yards | Three Forks, MT

Sitz Incentive 704H

19677938

BW	WW	YW	Milk	\$M
+0.5	+77	+128	+25	+107

TH Chiefton 1440

20199204

BW	WW	YW	Milk	\$M
+1.9	+88	+153	+28	+72

TH Gunsmoke 255

19325461

BW	WW	YW	Milk	\$M
+2.3	+71	+114	+29	+99

Rick 406-581-2078

85 Lone Mountain Rd • Toston, MT 59643

ThousandHillsAngus.com

Stevenson Down T Angus

Darrell and Sara Stevenson
428 Birky Rd
White Sulphur Springs, MT 59645
stevenson.darrell@yahoo.com
(406) 350-5443
www.StevensonAngus.com
See ad on page 21

Stevenson, Bob & Robin

See Stevenson Angus Ranch

Stevenson, Clint

See Stevenson's Diamond Dot, Inc.

Stevenson, Darrell and Sara

See Stevenson Down T Angus

Stevenson, Doug, Sharon, Nicole

See Basin Angus Ranch

Stevenson's Diamond Dot, Inc.

Clint Stevenson
PO Box 178
Hobson, MT 59452
stevensonsddot@yahoo.com
(406) 366-9023 • (406) 374-2250
www.StevensonsDiamondDot.com
See ad on page 71

Summit Angus Ranch

Roger & Sandy Jacobs
7445 Hwy. 312 East • Billings, MT 59105
auctions@jacobslivestock.com
(406) 373-6124 • (406) 698-7686
www.JacobsLivestock.com
See ad on page 14

Sutherland, Chad & Lacey

See 3C Cattle LLC

Sutherland, Cody

See 406 Cattle

Swanson, Daryle & Pam

See Apex Angus

Swanson, Klint & Lori

See Shipwheel Cattle Co.

T

Thielen, Bob & Missy

See Cactus Cattle Company

Thiessen Regency Acres Angus

Russell & Jill Thiessen
33142 CR 117 • Lambert, MT 59243
raa@midrivers.com
(406) 480-5988 • (406) 774-3702
www.RegencyAcres.com
See ad on page 13

Thomas Livestock Services

Jeff Thomas
419 Sanders Avenue
Bozeman, MT 59718
jeffthomas138@gmail.com
(406) 581-8859
See ad on page 86

Thompson, Harvey & Lynn

See Braun Creek Angus

Thompson, Jesse


See Montana Angus Association

Thousand Hills Angus

Rick Van Dyken
85 Lone Mountain Rd • Toston, MT 59643
(406) 570-1337
www.ThousandHillsAngus.com
See ad on page 67

Timber Line Ranch

Jake, Jane, Cate & Krista Callantine
3689 Flathead Pass Rd.
Belgrade, MT 59714
tlrangus@gmail.com
(406) 388-2408 • (406) 581-4764
www.TimberLineAngus.com
See ad on page 3



Annual Production Sale
MONDAY, MARCH 17 2025
1pm at the Ranch • Hingham, MT
14504 Road 6 North

OFFERING SONS OF:
Shipwheel Confederate 1507 - 20326233
WW Steakholder 2970 - 20493287
MAR Gratitude 26 - 20514995
S Wrangler 830 - 19198304
TEF Validate 042 - 19793268
A A R Load Up J277 - 20154050
GDAR Bardolier 2363 - 20392352

We Believe the Mother Cow Matters

www.WhistlingWindsAngus.com

David Sattoriva Family
H: 406-397-3386
C: 406-390-1471
E: whistlingwindsangus@gmail.com



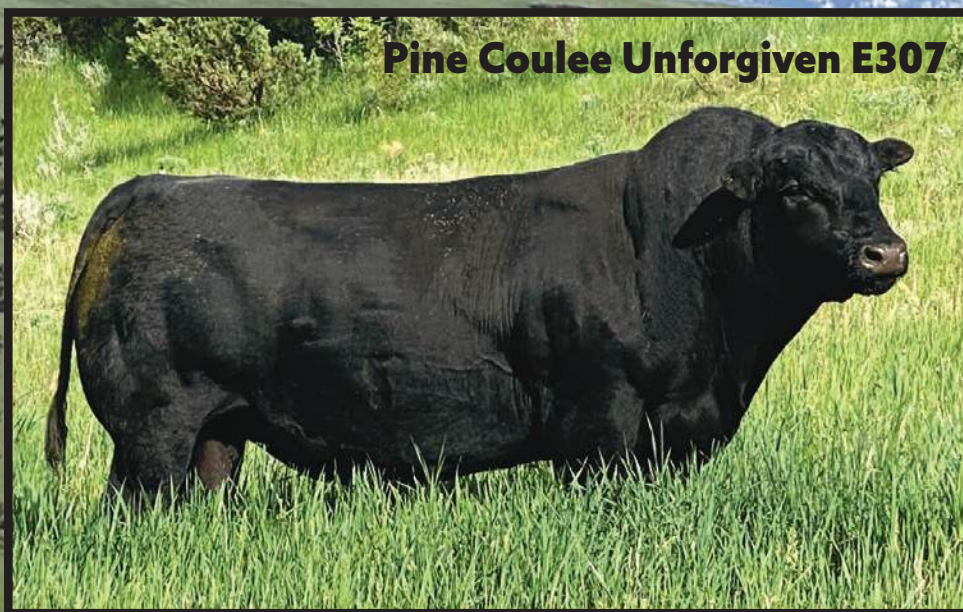
PINE COULEE BULL SALE 3/10/2025

Wagon Box Ranch, Hardin, MT • Lunch at 11:00 • Sale at Noon

SELLING 160 ANGUS BULLS

Jim Stampfel (406) 780-1230

John Carrel (406) 855-2832



Pine Coulee Unforgiven E307

SELLING SONS OF:

- Executive Decision
- Duff Real Deal 19115
- EAR Goldrush H83
- Shipwheel Northern Lights
- Coleman Glacier 041
- Sitz Resilient 10208
- Flying N Ebony 9022

**FREE DELIVERY • VOLUME DISCOUNTS
AFFORDABLE QUALITY IN VOLUME**

Todd, Tim

See Green Mountain Angus Ranch

Tomschin, Logan

6210 Christina West
Hilger, MT 59451
(406) 462-5395

Top Notch Angus

Marvin Cross
PO Box 872
Thompson Falls, MT 59873
topnotchangus49@gmail.com
(406) 262-3127

Trangmoe Angus Ranch

Jim & Robin Trangmoe
192 Road 250
Glendive, MT 59330
7cross@midrivers.com
(406) 687-3315 • (406) 989-3315
www.7Cross@midrivers.com

Treasure Bull Test

Ryan & Karnell Perry
P.O. Box 1
Power, MT 59468
info@treasurebulltest.com
(406) 788-9869 • (406) 390-5473
www.TreasureBullTest.com

Trexler Angus

Larry Trexler
455 Coach Lane
Hamilton, MT 59840
skal creek@msn.com
(406) 363-8818

Tri Mountain Angus

Gregory W. Field
2927 Hwy. 284
Townsend, MT 59644
gwfield58@gmail.com
(406) 266-4464 • (406) 439-4505

Turley, David O & Altana

1635 Fishel Creek Rd
Musselshell, MT 59059
(406) 947-2310"

Turner Angus

Paul D. Turner
PO Box 145
Shelby, MT 59474-0145
pturner@northerntel.net
(406) 337-3800
www.TurnerAngus.com
See ad on page 62

Turner Meadow Ranch

Mark Ahearn
1615 VanZandt CR 3416
Wills Point, TX 75169
tmranch@aol.com
(972) 742-7789

Turner, Paul D.

See Turner Angus

U

Universal Semen Sales

Chase Murray
7 Tourmaline Lane
Great Falls, MT 59404
chase@universalsemensales.com
(800) 227-8774 • (406) 453-0374
www.UniversalSemenSales.com

V

Van Dyke Angus Ranch

Lee Van Dyke
8295 Highline Road
Manhattan, MT 59741
lvandyke@vdar.com
(406) 579-2585 • (406) 579-0798
www.VDAR.com



SCAN TO VIEW OUR WEBSITE



Seek The Balance

MILK
GROWTH
DISPOSITION
BIRTH WEIGHT
REPRODUCTION



B Bar Black Mass 3045 AAA 18137165



B Bar Conviction 2398 AAA 19134438

Sires include

**B Bar Power Mass 9231, B Bar Resilient 872, B Bar Windy 79,
PRA Bulldogger 1197, SRS Headline 9300K**

Annual Bull Sale

March 22, 2025

1pm, Bull Palace - Baker, MT

Selling 90
registered Black Angus
yearling bulls

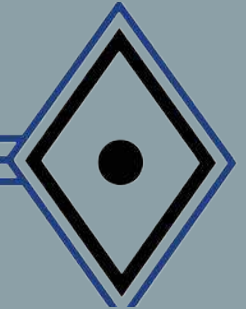
Find us on  

Steve: 406-588-3631 Rob: 406-588-3000 Ethel: 406-588-3771
301 E Carlyle Road | Wibaux, MT 59353



A history of excellence with a vision for the future.

STEVENSON'S



DIAMOND DOT

Fall Production Sale Dec. 2nd 2024

- ◆ **240 Bull Calves**
- ◆ **100 Two-Year-Old Bulls**
- ◆ **100 Registered Females**
- ◆ **1000+ Commercial Females**

Bulls & Beers

**Auction and Private Treaty Sale
March 19th 2025**

- ◆ **70 Fall Born Bulls**
- ◆ **220 Yearling Bulls**

**Clint & Adana
Stevenson
406.366.9023**

Featuring Sons of...

Hobson	Versatile
Galatic	Redemption
Logo	Patriarch
Bronc	Man in Black
Calvalry	Exclusive

Van Dyke Angus Ranch

Tim Crabtree
 8295 Highline Rd
 Manhattan, MT 59741
 tcrabtree@vdar.com
 (406) 579-0798 • (406) 579-2585
 www.VDAR.com

Van Dyke Angus Ranch

Tom Wulff
 12393 Frontage Rd.
 Manhattan, MT 59741
 twulff@vdar.com
 (406) 580-1606
 www.VDAR.com

Van Dyke, Lee

See Van Dyke Angus Ranch

Van Dyke, Ron & David

See Wheeler Mountain Ranch

Van Dyken, Rick

See Thousand Hills Angus

Van Gelder, Dallas

See VGA Livestock

Veltkamp Angus Ranch

Darin Veltkamp
 6485 Highline Rd.
 Manhattan, MT 59741
 dveltkamp@hotmail.com
 (406) 539-8564
 www.VeltkampAngus.com

Vennes, Gail

See GaLor Angus

Vermilion Ranch

Goggins Family
 PO Box 30758
 Billings, MT 59105
 bcook@cattleplus.com
 (406) 670-0078 • (406) 861-5664
 www.VermilionRanch.com
See ad on page 17

VGA Livestock

Dallas Van Gelder
 14390 Churchill Rd.
 Manhattan, MT 59741
 dallas.vangelder@gmail.com or
 montanavg7@gmail.com
 Dallas (406) 581-8086
 Carol (406) 570-6452
 vgalivestock@gmail.com
 www.VGALivestock.com

Vincent, Bryan

See B & K Livestock

Vitt, Jim, Dale, or Cody

See Bar JV Angus

Voss, Dennis & Erica

See Horse Butte Ranch

W**Wacker, Duane & Julie**

See A Bar Angus

Wagner, Darryl & Kari

See J L Farms Inc.

Walling, Gladys

PO Box 55
 Winifred, MT 59489
 gladwall@mtintouch.net
 (406) 462-5330

Ward's Flying W

Gary Ward
 PO Box 69
 Gallatin Gateway, MT 59730
 (406) 580-4488

CACTUS CATTLE COMPANY
ANNUAL BULL SALE
THURSDAY, MARCH 27, 2025
 Belle Fourche Livestock Market - Belle Fourche, SD
 Online Bidding at CattleUSA.com
COMING 2 YR OLD BLACK ANGUS REGISTERED BULLS



Bulls Sired By:
 Cactus Achievement, Cactus Cortachy Boy, Cactus Desert Star, Cactus Tahoe, Cactus Trending Star, Connealy Stronghold, RM Baron, RM Duni Cortachy Boy

www.cactuscattleco.com
 PLEVNA, MONTANA (406) 772-5811




MONTANA
 grafix

HANNAH NORSKOG
 HANNAH@MONTANAGRAFIX.COM
 MONTANAGRAFIX.COM | 406.399.7763

Cattle Promotion
 Printing & Mailing Services
 Graphic & Web Design
 Embroidery & Promo Products

Let's turn your dreams into a reality!

COLE CREEK BLACK CEDAR 46P (#14496765)

CED +2 • BW +2.4 • WW +47 • YW +84 • Milk +22 • SC +1.10 • SEN +7 • SW +48 • Marb +.36 • RE +325 • SB +92



Cole Creek Angus...

Breeding Angus for the Grasslands of America

Functional Fertility: I recently read articles in two publications concerning why there is a trend for so many open cows. All they talked about was body condition of the cows and if they were not a 5-6, you need to change your inputs and feed more high input supplement feed so those cows will breed. Same ranch, same program that your dad and granddad have been working for 80 years. Again, you have to change. Not once did they say that extreme EPD's, terminal growth, the race for the most created cows too big for your ranch environment. Example: \$Beef EPD is geared towards calves with a terminal end point and NO replacements retained. The higher the \$Beef EPD, the more TERMINAL. When you have maxed out the efficient maternal 1200-1300lb range cow, the only way to increase weaning weights is to increase cow size. Bigger cows = bigger calves = bigger weaning weights. And therein lies the problem for bigger cows - they take more inputs to function. Not one time did they mention that synchronizations and drugs to make them cycle to get bred has taken the natural sort out of Mother Nature to show which cows can cycle on low inputs and get bred without Dr. Drug, without the high supplement input environment. The Angus breed has become a race for numbers and most Angus breeders have forgotten about the importance of maternal functional size for the grassland ranchers. Remember - in the American Angus Association, environment is never figured into the numbers.

At Cole Creek Angus, we breed for low input Angus genetics. The 1200-1300lbs cow wintered on hay and straw when the snow covers the grass, and only grass the rest of the time. We breed for feet, fertility, and function in range cows that can travel and still turn grass into dollars.

The race of the number breeders to be number one have turned feet, fertility, and function into the "F" words of the Angus breed. Be careful of your selections as a grassland rancher or you'll be adding another "F" word of your own to go along with these failed traits.

www.ColeCreekAngusRanch.com

Sale catalog available for viewing in mid-March

CSS semen for sale at \$20 a straw (volume discounts) and \$30 per certificate.

Cole Creek Angus Ranch
MATERNAL PERFORMANCE

Registered Angus — 62 Years

Always breeding for the Proven Female

Box 94 • Joliet, MT 59041

Greg Golden 406/962-3743

Stacie Golden (Hansen) 406/694-7254

www.ColeCreekAngusRanch.com

2025 SALE CATTLE SIRES:

- Cole Creek Sure Black V72
- Cole Creek Juanada Lad V12
- Cole Creek Pure Juanada 679
- J MC 1841 of 5339 "Jack"
- Cole Creek Sure Black X106

★ Performance Raised ★ Performance Proven ★

50th Annual Sale
Monday, March 24, 2025

Midland Bull Test Facilities • Columbus, MT

Warehime Angus

John & Valarie Warehime
30871 Byoh Lane
Potomac, MT 59823-9648
wareangus@yahoo.com
(406) 244-5526

West Wind Angus Ranch

Stacey & Michelle Gravenhof
402 Johnson Road
Roundup, MT 59072
westwindangusranch@gmail.com
(507) 360-7969
www.WestWindAngusRanch.com

Western Ag Reporter

John Goggins
PO Box 30758
Billings, MT 59107
john@westernagreporter.com
(406) 698-4159

Westra Angus

Bernie & Kurt Westra
3525 Heeb Road
Manhattan, MT 59741
berniemayra@littleappletech.com
(406) 282-7618

Wheeler Mountain Ranch

Ron & David Van Dyke
129 Ridder Lane
Whitehall, MT 59759
wheelermt@hotmail.com
Ron (406) 490-2734
David (406) 490-5977
www.WheelerMountainRanch.com

Whistling Winds Angus, Inc.

David Sattoriva
14504 Rd. 6 N.
Hingham, MT 59528
whistlingwinds@hotmail.com
(406) 390-1471 • (406) 397-3386
www.WhistlingWindsAngus.com
See ad on page 68

Whiteman, Shane

190 Ferdig Rd
Oilmont, MT 59466

Willekes Angus

Bob Willekes
10 Cowboy Way
Choteau, MT 59422
mtmarblegranite@yahoo.com
(406) 590-2520

Williams Angus Ranch

Dana or Tyler Williams
143 Jewett Lane
Three Forks, MT 59752
wmsangus@hotmail.com
(406) 579-0460
www.WilliamsAngus.com

Williams & McDonnell families

See Midland Bull Test

Winding River Angus

Louis & Kathy Dubs & Family
4910 Custer • Billings, MT 59106
windingriverangus@gmail.com
(406) 652-7515
www.WindingRiverAngus.com
See ad on page 66

Windy Ridge Angus

Karen Harrer Davis
PO Box 336
Geraldine, MT 59446
windyridge@itstriangle.com
(406) 737-4320

Wittkopp Angus

Curt & Sue Wittkopp
723 MT Hwy. 200 S • Circle, MT 59215
wipangus@midrivers.com
(406) 485-3552 • (406) 974-3552
www.WittkoppAngus.com



FITZSIMMONS-BALTRUSCH
ANGUS RANCH
CANYON CREEK - HAVRE MT

Annual Production Sale

APRIL 7, 2025

"OUR TOP PRIORITY
IS YOUR BOTTOM LINE"

40 BULLS - TOP 40% OFFERED

**JOIN US IN HAVRE, MT
OR ONLINE AT FRONTIERLIVESALE.COM**



**LUNCH SERVED AT 12:00PM - SALE AT 1:00PM
AUCTIONEER - KYLE SHOBE**



MC CUMBER TIBUTE 9180 - RM SCOTTSMAN 9625 - GRYGIEL BOTTOM LINE 129
RM MCLENDON 9599 - RM BIG EASY 0585 FJB

FULL DETAILS ONLINE! WWW.FBARANCH.COM  **FBA RANCH**

For over *four* decades, our *family* has *focused*
 on building a *foundation* with a *functional* cowherd.

Add *efficient*
functionality
 to your herd!



SITZ RESILIENT 10208 '19057457
 CED BW WW YW SC M MARB REA \$B
 +5 +0.6 +79 +137 +1.14 +25 +0.95 +0.50 +133



SITZ REWARD 12220 '19660492
 CED BW WW YW SC M MARB REA \$B
 +10 -0.2 +79 +148 +1.84 +18 +0.16 +0.50 +131



COOK BOMBER 926G '19549744
 CED BW WW YW SC M MARB REA \$B
 +16 -1.5 +59 +108 +0.60 +37 +0.87 +0.50 +160



STERLING BOND 007 '+19823211
 CED BW WW YW SC M MARB REA \$B
 -2 +3.2 +78 +145 +0.93 +20 +0.90 +1.29 +202

Visitors
Welcome!

Annual Production Sale

Tuesday, March 25, 2025

1 p.m. MDT :: Bar JV Sale Barn :: North of Sidney, MT

Selling: 100 :: Angus Bulls
 150 :: Commercial
 Heifers



Contact us for a sale book
 or to view the bulls.



BAR JV ANGUS

Dale & Jill Vitt :: (406) 798-3398 :: (406) 480-5676 cell
 Jim & Loretta Vitt :: (406) 798-3653 :: (406) 630-2959 cell
 www.barjv Angus.com :: 14013 Cty Rd 340 :: Fairview, MT 59221



MONTANA ANGUS ASSOCIATION
BOARD OF DIRECTORS

Chad Denowh, *1st Vice President*
Gartner-Denowh Angus Ranch
 34750 Country Road 127
 Sidney, MT 59270
 (406) 798-3541 H • (406) 489-1762
 chadd@midrivers.com

Kevin Arntzen, *1st Vice President*
Arntzen Angus
 231 Christina West
 Hilger, MT 59451
 (406) 462-5570 H • (406) 350-1612 C
 karntzen14@yahoo.com

Bill Cook, *2nd Vice President*
C Spear Angus
 1980 Nth 5th Rd.
 Huntley, MT 59037
 cookbill44@gmail.com
 (406) 670-0689

Kim Skinner, *Director*
Skinner Ranch Seedstock
 46 Farm to Market Rd. W.
 Hall, MT 59837 • (406) 581-1852 C
 skinnerranch@hotmail.com

Kurt Swanson, *Director*
Apex Angus
 8805 Valier Hwy
 Valier, MT 59486
 (406) 279-3341 H • (406) 799-7026
 kcme@3rivers.net

Andee Peterson, *Director*
Peterson Grain & Cattle
 32116 Road 230 N
 Havre, MT 59501
 (406) 945-2717 C
 andreebrook@gmail.com

Brian Barragree, *Director*
Barragree Cattle Co.
 PO Box 562
 Absarokee, MT 59001
 (406) 780-1219
 barragrecattleco@hotmail.com

Rick Van Dyken, *Director*
Thousand Hills Angus
 85 Lone Mountain Road
 Toston, MT 59643
 blkcttle@aol.com • (406) 581-2078

Russell Thiessen, *Director*
Regency Acres
 33142 CR 117
 Lambert, MT 59234
 raa@midrivers.com • (406) 480-5988

John Carrel, *Director*
H C Cattle
 PO Box 1450
 Columbus, MT 59019
 lauriecarrel@live.com • (406) 855-2832

Woirhaye Cattle Co, LLC
 Ryan Woirhaye
 2953 Old Darby Road
 Darby, MT 59829
 rjwoirhaye@live.com
 (406) 821-0939 • (406) 531-4531

Woirhaye, Ryan
See Woirhaye Cattle Co, LLC

World West Sire Services Inc.
 Scott Spickard
 25 Winterpast Lane
 Joliet, MT 59041
 scott@worldwestsire.com
 (406) 628-7510
 www.WorldWestSire.com
See ad on page 89

Wulff, Tom
See Van Dyke Angus Ranch

X

XC Ranch Inc.
 Tom Carey Jr.
 2235 Hwy. 69
 Boulder, MT 59632
 xc ranch@jeffbb.net
 (406) 287-5265

Y

Yadon Angus Ranch
 Sally Yadon
 7210 #1 Ranch Road
 Manhattan, MT 59741
 sallyyadon@yahoo.com
 (406) 284-6481

Yaeger Ranch
 Chris Yaeger
 745 Armells Road
 Hilger, MT 59451
 (406) 538-3162

Yellowstone Boys & Girls Ranch
 Gary Adams
 1732 S 72nd Street. W
 Billings, MT 59106
 garya@ybgr.org
 (406) 855-5230
 www.YBGR.org

Membership Directories are listed in more detail on our website:
www.MTAngus.org/Members

Membership dues can now be paid online through our website.
 To become a Montana Angus Association Member:
 visit www.MTAngus.org/Membership

Email or mail Membership Forms to:
 Montana Angus Association
 Jesse Thompson
 PO Box 25
 Whitlash, MT 59545
montanaangusnews@mtangus.org



Jesse Thompson

MAA Executive Administrator
 Montana Angus News Editor/Publisher
 406.450.3429
 PO Box 25 • Whitlash, MT 59545
montanaangusnews@mtangus.org

September/October 2024

Deadline Aug 21 • Distributed mid-Sept

November/December 2024

Deadline Oct 9 • Distributed 1st of Nov

January/February 2025

Deadline Jan 5 • Distributed mid-Jan

March/April 2025

Deadline Feb 12 • Distributed 1st of Mar

Breeder's Directory 2025-2026

Deadline July 1 • Distributed August



**RECEIVING DATES
SEPT 11-21, 2024**

GROUP 1 - 1/2 Spring-Born Angus Bulls
NOW ACCEPTING A LIMITED NUMBER OF
FALL ANGUS FOR THE 2024-2025 TEST SEASON
ALL FALL BULLS - Charolais, Gelbvieh,
Hereford, Red Angus, Salers, Simmental,
South Devon and Additional Breeds

**RECEIVING DATES
OCT 9-19, 2024**

GROUP 2 - 1/2 Spring-Born Angus Bulls
ALL SPRING BULLS - Charolais, Gelbvieh,
Hereford, Red Angus, Salers, Simmental,
South Devon and Additional Breeds

THINK
MIDLAND WHEN
BUILDING YOUR
Masterpiece

We know there's a lot to consider when selecting bulls: maternal, fertility, efficiency, performance, structure, carcass, reputable, reliable... **THE PIECES MUST FIT TOGETHER.**

We gather individual results and provide **MORE PROVEN INFORMATION** than anyone in the business.



FINAL SORT SALE: APRIL 3-4, 2025

Accepting bull entries in September and October!
Visit MidlandBullTest.com for details.

MIDLAND
BULL TEST

STEVE & AMY WILLIAMS

5 Bull Drive - Columbus, MT 59019

Cell: (406) 321-7046 • **Office:** (406) 322-5597

E-mail: bulls@midlandbulltest.com

Text or e-mail for a catalog!

FIND INFO AT: www.MidlandBullTest.com



Showcase Your Herd

Allflex® Custom Tags Are Your Mark of Quality

With crisp, clean markings, you can personalize Allflex Custom Tags with a logo, promote practices and sort cattle by combining colors with custom text.



www.allflexusa.com

Copyright ©2024 Merck & Co., Inc., Rahway, NJ, USA and its affiliates. All rights reserved.



Selling 90 Angus Bulls & 50 Replacement Heifers

Hoffman **BAR NONE**



Basin Payweight 1682#	calved: 09/02/21										tattoo: 1818	reg: +20307818	Owned by Genex Hilltop Angus Hoffman Ranch
Deer Valley Growth Fund	CED	BW	WW	YW	SC	Milk							
Deer Valley Rita 36113	+10	+0.2	+91	+156	+ .70	+32							
KG Solution 0018#	Claw	Angle	PAP	CW	Marb	RE	SM	\$W	\$F	\$C			
HA Rito Lady 3839	+ .54	+ .38	+ 2.35	+ 73	+ .61	+ .79	+ 110	+ 98	+ 118	+ 327			
HA Rito Lady 0622													

BAR NONE is unmatched in his combination of visual quality, genetic predictions, and powerhouse pedigree. He is a well balanced bull that is heavy muscled and sound structured. We are excited about his calves and their offering of great calving ease and amazing early growth.

Annual Production Sale
Tuesday

APRIL 9th 2024

Lunch at Noon
Sale at 1:00 p.m.

3 miles south of
Denton, Montana



Cory & Tammie Poser 406/ 366-3461
Gary & Carmen Poser 406/ 567-2627
1831 Everson Road • Denton, MT 59430
cory.poser@icloud.com



Contact us for
your Sale Book!

www.HilltopAngus.com

NATIVE ABERDEEN ANGUS

King Kong of Saddle Butte



calved 01/16/13 • AAA +17779227
sire Dunlouse Commander Bond
dam Dunlouse Kindness G212

All heifer bulls!

Poacher of Saddle Butte



calved 02/20/10 • AAA +16860157
sire Dunlouse Cortachy Boy D137
dam Flora of Wickwire 342

Jipsey Jack of Saddle Butte



calved 01/16/13 • AAA +17779227
sire Evesund of Dupplin
dam Dunlouse Jipsey Clova C095

Dunlouse Newman S615



calved 04/26/16 • UK 540196 200615
sire Jubilant 2nd of Bohey
dam Dunlouse Nina N506

Karma of Saddle Butte



calved 01/22/12 • AAA +17420116
sire Dunlouse Cortachy Boy D137
dam Dunlouse Kindness G212

Rambler of Saddle Butte



calved 02/05/18 • AAA +19342334
sire Dunlouse Jipsey Earl E161
dam Dunlouse/SCC Ruby 7500

Saddle Butte Ranch

Harrison O'Connor

A seed-saver of original Angus!

2704 Cottonwood Creek Road
Geysler, MT 59447

406/ 735-4400 • saddleb@3rivers.net

www.SaddleButteRanch.com

6313
1590
49110

6313
1590
49110

Selling on
DVAuction
Broadcasting Real-Time Auctions



Math Farms

SINCE 1915

16th Annual Production Sale

SATURDAY APRIL 12TH 2025

GLASGOW STOCKYARDS, GLASGOW, MONTANA

**FEATURING PROGENY OF MYERS FAIR N
SQUARE, MILLARS DUKE, GDAR LOAD UP 7104,
WOODHILL AGENDA J043, PGC LATITUDE 49
& GDAR CLIPPER**

11096 NORTH FORKS RD. WHITEWATER, MT 59544 | BOB MATH: (406) 672-2323
CODY : (406) 671-1949 | CODY@MATHFARMS.COM

MATHFARMS.COM

Breeding Registered Angus Cattle for over 35 years

SEEDSTOCK & COMMERCIAL PRIVATE TREATY 2024-2025

*B: = BULLS F: = FEMALES

RANCH	BULLS BRED HEIFERS OPEN HEIFERS COWS				AVAILABLE*	CONTACT	PHONE	LOCATION
	SEEDSTOCK PRIVATE TREATY 2024-2025							
7 Bar Heart Registered Angus	✓				B: Apr-June	Aimee Hachigian-Gould	(406) 866-3513	Ulm, MT
A Bar Angus	✓		✓	✓	B: Jan-Dec, F: Oct-Dec	Duane Wacker	(406) 861-7459	Roundup, MT
B & K Livestock	✓	✓	✓		B: Mar-Jun, F: Sept-Dec	Bryan Vincent	(406) 423-5313	Moccasin, MT
Black Pine Farm	✓		✓		B: Apr-May, F: Sept-Nov	Bill Jensen	(406) 847-2733	Heron, MT
Blacktail Angus	✓				B: Apr-May	Scott & Nicole Andersen	(406) 683-4980	Dillon, MT
Boyd Angus Ranch	✓		✓		B: Jan-Apr, F: Oct	Ellis or Mark Boyd	(406) 596-5646	Alder, MT
BTD Ranch, Inc.	✓				B: Mar-May	Bruce Duncan	(406) 399-6300	Joplin, MT
Carr Angus Ranch	✓				B: Apr	Kyle Carr	(406) 570-4264	Hobson, MT
Cole Creek Angus Ranch	✓		✓		B: Mar-Apr, F: Nov	Greg Golden	(406) 962-3743	Joliet, MT
Dye Ranch	✓				B: May-June	Heather Dye	(406) 350-2793	Stanford, MT
Elmose Angus Ranch	✓				B: Feb-Apr	Mike Elmose	(406) 580-6973	Three Forks, MT
Gardner Angus	✓	✓		✓	B: Dec, F: Dec	Ray Gardner	(406) 351-9283	Judith Gap, MT
Giem Angus	✓				B: Dec	Gary Giem	(406) 684-5767	Twin Bridges, MT
Granger Angus	✓		✓	✓	B: Dec, F: Oct, Dec	Jim Granger	(406) 736-5588	Great Falls, MT
Green Mountain Angus Ranch	✓	✓		✓	B: Mar, F: Nov	Tim Todd	(406) 220-1975	Ryegate, MT
Griffin Land & Cattle Co	✓				B: Apr-May	Andrea Pearson	(406) 208-9709	Billings, MT
H C Cattle	✓		✓		B: Mar, F: Oct	John Carrel	(406) 855-2832	Columbus, MT
Harmon Angus	✓		✓		B: May-Jul, F: June	Steve Harmon	(406) 636-4754	Lavina, MT
Hollow Top Angus	✓				B: Oct-Dec	Clay Clarke	(406) 223-5078	Pony, MT
Infinity Angus	✓				B: June-July	Edwin Miner	(406) 893-7788	Peerless, MT
Jones Creek Ranch	✓	✓	✓	✓	B: Jan-June F: Nov-Dec	Casey Kombol	(406) 331-0696	Roundup, MT
KEL MCC Angus	✓				B: May-June	Kelly McCracken	(406) 262-2349	Turner, MT
Kimm Angus		✓	✓		F: Nov	Tom & Riley Kimm	(406) 580-6172	Manhattan, MT
L K Bar Angus	✓				B: Jan	Larry Krein	(406) 253-5692	St. Ignatius, MT
Larry Green		✓		✓	F: Sept	Larry Green	(406) 679-1863	Hardin, MT
Les Craft Angus	✓	✓	✓	✓	B: Feb-Apr, F: Oct-Nov	Les Craft	(406) 322-6158	Columbus, MT

SEEDSTOCK & COMMERCIAL PRIVATE TREATY 2024-2025

RANCH					AVAILABLE*	CONTACT	PHONE	LOCATION
	BULLS	BRED HEIFERS	OPEN HEIFERS	COWS				
Malcolm Mile-Hi Ranch	✓	✓	✓	✓	B: Mar-June, F: April-Nov	Asha Malcolm	(406) 223-1657	Livingston, MT
McDonnell Angus	✓				B: Feb-Mar, May	Leo McDonnell	(406) 780-0176	Columbus, MT
Michael Angus	✓	✓			B: Apr, F: Dec	John Michael III	(406) 220-5997	Livingston, MT
Middlemist Cattle	✓				B: Jan-Mar	Kyle Middlemist	(406) 396-4282	Polson, MT
MLK Angus	✓	✓	✓		B: Feb-May, F: Nov-Mar	Mark Keller	(406) 431-0872	Helena, MT
Murphy Angus	✓		✓		B: May-June, F: Mar-May	Brad Murphy	(406) 539-7041	Winnett, MT
Peterson Angus	✓		✓	✓	B: Mar-June, F: Nov-Dec	Randy Peterson	(406) 240-5897	Drummond, MT
Peterson Grain & Cattle	✓		✓		B & F: April	Kim Peterson	(406) 945-0544	Havre, MT
Piazzola Angus	✓		✓		B: Mar-April, F: Sept-Oct	Jerry Piazzola	(406) 310-0151	Butte, MT
Pine Coulee Angus	✓				B: April-June	Jim Stampfel	(406) 780-1230	Absarokee, MT
Rafter E Angus	✓					Craig Blevins	(406) 207-8339	Ronan, MT
Sand Rock Angus	✓		✓	✓	B: April-June	Bob Smith	(406) 853-0363	Broadus, MT
Sarpy Creek Angus Ranch	✓				B: Apr-June	James Millar	(406) 342-5813	Hysham, MT
Sevens Livestock	✓				B: April	Ben or Karli Johnson	(406) 480-2953	Choteau, MT
Shooting Arrow Cattle	✓				B: April	Mike Kirby	(406) 566-2563	Stanford, MT
Sitz Angus	✓					Jim Sitz	(406) 683-5277	Dillon, MT
Skogen GK Angus Ranch	✓	✓			B: May-June, F: Oct	Orville Skogen	(406) 264-5298	Fort Shaw, MT
Stevenson Down T	✓				B: April-June	Darrell Stevenson	(406) 350-5443	White Sulphur Springs, MT
Stevenson's Diamond Dot	✓	✓	✓	✓		Clint Stevenson	(406) 366-9023	Hobson, MT
Trangmoe Angus	✓		✓		B: May-July, F: April-June	Jim Trangmoe	(406) 687-3315	Glendive, MT
VGA Livestock	✓	✓	✓	✓	B: Feb-July, F: Sept-Mar	Dallas Van Gelder	(406) 581-8086	Manhattan, MT
Wheeler Mountain Ranch	✓				B: April	Ron Van Dyke	(406) 490-2734	Whitehall, MT
Winding River Angus	✓	✓	✓			Kathy Dubs	(406) 208-8643	Bridger, MT
Windy Ridge Angus		✓	✓		F: Dec	Karen Harrer Davis	(406) 737-4320	Geraldine, MT

*B: = BULLS F: = FEMALES

*Production Sale and Private Treaty Information will be listed on the 2024-2025 Sales & Events Calendar published in the Annual Directory, Montana Angus News and on the Association website. These listings are a benefit of your membership.

SEEDSTOCK & COMMERCIAL PRIVATE TREATY 2024-2025

*B: = BULLS F: = FEMALES

RANCH	BRED HEIFERS OPEN HEIFERS COWS			AVAILABLE*	CONTACT	PHONE	LOCATION
	✓	✓	✓				
COMMERCIAL PRIVATE TREATY 2024-2025							
7 Bar Heart		✓			Aimee Hachigian-Gould	(406) 866-3513	Ulm, MT
Armstrong Angus	✓			F: Oct-Dec	Chad Armstrong	(406) 224-0586	Cardwell, MT
Boyd Angus Ranch		✓		F: Oct	Ellis or Mark Boyd	(406) 596-5646	Alder, MT
Cole Creek Angus		✓		F: Nov	Greg Golden	(406) 962-3743	Joliet, MT
Dvorak Angus	✓			F: Sept	Cathy Dvorak	(406) 366-0564	Lewistown, MT
Infinity Angus				F: Nov	Edwin Miner	(406) 893-7788	Peerless, MT
Jones Creek Ranch	✓		✓	F: Nov-Dec	Casey Kombol	(406) 331-0696	Roundup, MT
Middlemist Cattle		✓		F: Oct-Dec	Kyle Middlemist	(406) 396-4282	Polson, MT
Ox Bow Ranch	✓			F: Sept-Oct	Ox Bow Ranch	(406) 235-4281	Wolf Creek, MT
Stevenson's Diamond Dot	✓	✓	✓	F: Oct-Jan	Clint Stevenson	(406) 366-9023	Hobson, MT
Trangmoe Angus		✓		F: May-July	Jim Trangmoe	(406) 687-3315	Glendive, MT
Veltkamp Angus	✓			F: Oct-Dec	Darin Veltkamp	(406) 539-8564	Manhattan, MT
Wheeler Mountain Ranch	✓		✓	F: Nov-Dec	Ron Van Dyke	(406) 490-2734	Whitehall, MT

MONTANA REGIONAL ASSOCIATIONS

Eastern Montana

President: Dale Vitt • (406) 798-3398

V. Pres: Chad Denowh • (406) 798-3541

Sec/Treas: Jill Vitt • (406) 480-9954

North Central Montana

President: Klint Swanson • (406) 357-2492

V. Pres: Jeff Hould • (406) 654-1116

Sec/Treas: Christie Nissen • (406) 357-2643

Central Montana

Chairman: J.R. Lund • (406) 350-1059

Sec/Treas: Corry Arntzen • (406) 366-0511

Midland Empire

President: Duane Wacker • (406) 323-4456

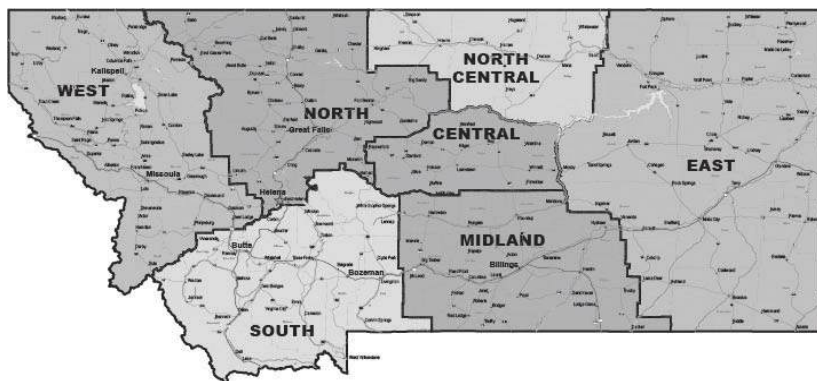
V. Pres: Gary Adams • (406) 655-4505

Sec/Treas: Michelle Gravenhoff • (507) 360-4733

North Montana

President: Jeff Flesch • (406) 337-3402

V. Pres: Mark Deboo • (406) 799-3480



Western Montana

President: Kim Skinner • (406) 581-1852

V. Pres: Craig Blevins • (406) 207-8339

Sec/Treas: Lacey Sutherlin • (406) 544-0043

South Montana

President: Tom Kimm • (406) 209-2653

V. Pres: Bernie Westra • (406) 579-4020

Sec/Treas: Lorrie Vennes • (406) 431-6113

C SPEAR ANGUS

Fifth Annual Production Sale



SELLING 85 ANGUS BULLS

Yearling Angus Bulls
Sired By:

- Ellingson Prolific
- Connealy Commerce
- Vermilion Riverside
- S A V Magnum
- Vermilion Three Rivers K179

**PERFORMANCE MINDED...
BECAUSE POUNDS PAY.**

Monday **APRIL 14** 2025
1:00 PM MT || Billings Livestock Commission || Billings, MT



COOK ANGUS
Bill & Codi Cook
Huntley, MT
406-670-0689 || cookbill44@gmail.com

MATT LIVESTOCK
Jess & Lana Matt
Bridger, MT
406-670-6311 || thematts@brmt.net



3C Cattle	57	Beartooth Angus	20	Diamond D Angus	41
Agribest Feeds	10	Beef 360	8	FBA Angus	74
Agri-Media Livestock Group	86	Bobcat Angus	15	First Defense	12
AllFlex	78	C Spear Angus	85	Flesch Angus	49
Apex Angus	87	Cactus Cattle Company	72	Gartner-Denowh	7
Armstrong Angus	47	Cattle Business Weekly	40	Goggins, Joe	50
Arntzen Angus	88	Circle L Angus	53	Green Mountain Angus	1
Ballyhoo Printing & Design	4	Clear Creek Angus	59	Hilltop Angus	79
Bar JV Angus	75	Cole Creek Angus	73	Hinman Angus	23
Basin Angus Ranch Inside Front Cover		Coleman Angus	Back Cover	Hollow Top Angus	44-45

Start planning for your production sales now!



Agri-MEDIA
LIVESTOCK GROUP

Providing more Livestock Marketing Coverage and Service than any other media in the business!

Lee Agri-Media publications go to over 160,000 livestock producers!

ENTER THE DIGITAL AGE STRATEGIC | EXPERIENCED
TRANSPARENT RESULTS-DRIVEN

CONNECTING YOUR BUSINESS WITH THE RIGHT AUDIENCES!



Jeff Thomas
The Prairie Star
Cell: 406-581-8859
jeffthomas138@gmail.com

- Traditional Print**
- Email Marketing**
- Ring Service**
- Audience Targeting**
- Facebook and or Instagram Targeting**
- Website Builds**

Indreland Angus	43
Jacobs Livestock Sales	14
JC Heiken Angus	9
KG Ranch	37
Lund's B Bar Angus	70
Math Farms	81
McDonnell Beef Country Genetics	27
Midland Bull Test	77
Montana Grafix	72
Mountain View Insurance	51
Northern Ag Network	24-25
NutraLix	42
Ox Bow Ranch	61
Peterson Grain & Cattle	19
Pine Coulee Angus	69
Regency Acres	13
Reminisce Angus Ranch	2, 65
Reyher Embryonics	18
Saddle Butte Ranch	80
Shipwheel Cattle Company	11
Sitz Angus	5
Skinner Ranch Seedstock	55
Split Diamond Angus	63
Stevenson Angus Ranch	21
Stevenson's Diamond Dot Angus	71
Thousand Hills Angus	67
Timber Line Ranch	3
TriState Livestock News	39
Turner Angus	62
Vermilion Ranch	17
Whistling Winds Angus	68
Winding River Angus	66
World West Sire Services	Inside Back

Ridin for the Brand

52nd PRODUCTION SALE
MARCH 4, 2025

1:00 PM MST • At the ranch • Valier, Montana

- Performance Proven Yearling Sons
- Solid Foundation Yearling Heifers
- Bangs Vaccinated • Ready to Breed

Apex Angus remains dedicated to producing seed stock that will enhance the commercial cattlemen from "birth" to "plate".

The bulls and heifers offered on 3/4/2025 will keep on doing for you what they've done for years at APEX ANGUS, an honest and trustworthy job.

Shipwheel Rainmaker 0538



Reg: *20003132

CED	BW	WW	YW	SC	HP	Milk	MB	RE	FAT	\$M	\$W
-2	+5.4	+74	+134	+1.99	+16.5	+27	+95	+63	+0.49	+54	+51

Additional Featured Sires:

- Apex Courage 098
- Black Rifle 5099
- Meyers Fair N Square M39
- Sitz Continuity
- And others

Connealy Commerce



Reg: *20132642

CED	BW	WW	YW	SC	HP	Milk	MB	RE	FAT	\$M	\$W
+14	+9	+95	+161	+1.11	+12.1	+27	+1.03	+1.11	+0.27	+83	+92

S Armstrong



Reg: *20143639

CED	BW	WW	YW	SC	HP	Milk	MB	RE	FAT	\$M	\$W
+9	+4	+85	+136	+1.64	+16.6	+32	+65	+73	-0.25	+123	+94



Genetics that perform

First-class feminine deep bodied heifers, carry peak performance cowherd building traits, quiet dispositions, and ADDED-VALUE carcass returns.

APEX

Angus

THE SWANSON FAMILIES

7 Generations of Angus Cattle In Big Sky Country

Kurt 406-279-3341
 Kirby 406-472-3245
 Daryle & Pam 406-279-3548

www.apexangus.com • apex@3rivers.net

Basin Jumbo 1315



Reg: +*20102954

CED	BW	WW	YW	SC	HP	Milk	MB	RE	FAT	\$M	\$W
+9	+2.2	+82	+147	+1.75	+10.4	+27	+1.10	+96	+0.66	+67	+74



ARNTZEN ANGUS RANCH

POWER OF PREDICTABILITY

What does 69 years of breeding with the same goal in mind get you?
A consistent, predictable product that has stood the test of time.

Koupals B&B Bridger 2041

Reg. 20515570



CED	BW	WW	Milk	YW	Marb	REA
+13	-2.1	+62	+34	+109	+42	+73

Simonson Stryker 942



CED	BW	WW	Milk	YW	Marb	REA
+10	+0.8	+75	+26	+130	+31	+69

OTHER SIRES INCLUDE

GDAR Load Up 7104

Pine Coulee Hannibal H316

Millars Duke 129 • Diamond Goalkeeper J160

KG Justified 3023 • A A R Load Up J277

A A R Justified 2616

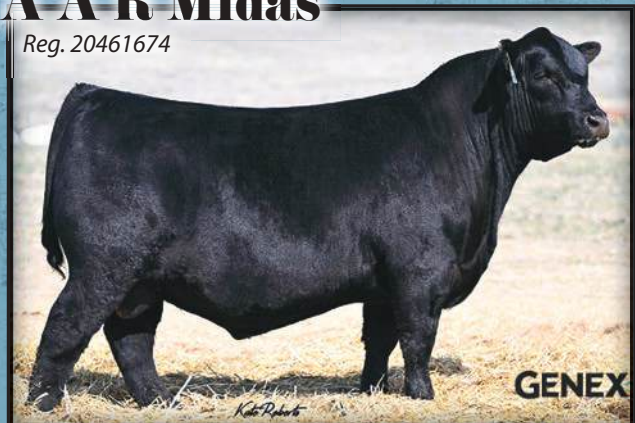
Reg. 20457765



CED	BW	WW	Milk	YW	Marb	REA
+16	-1.9	+81	+30	+139	+62	+17

A A R Midas

Reg. 20461674



CED	BW	WW	Milk	YW	Marb	REA
+13	-1.8	+73	+34	+123	+87	+71



Brad Arntzen cell: 406.350.4000
Kevin Arntzen cell: 406.350.1612
Derik Arntzen cell: 406.350.1728

577 Arntzen Lane
Hilger, MT 59451

arntzen@mtintouch.net
www.arntzenangus.com

APRIL 3RD, 2025 • 1:00 P.M.

49th Annual Production Sale at the ranch

Selling 210 Bulls & 20 Top End Yearling Heifers

All bulls have genomically enhanced EPDs.

Montana Angus News

2024-2025 Directory



HOME AWAY FROM HOME TO THE WORLD'S GREATEST BEEF BULLS

LEADING THE PRODUCTION TEAM

NICKY KLINGAMAN
NKLINGAMANWWSS@GMAIL.COM

MADDIE MYHRE
MMYHREWWSS@GMAIL.COM

MAC SPICKARD
MAC.WWSS@GMAIL.COM
MOBILE 406-208-8237

OFFICE: 406-628-7510 | EMAIL: RELEASE@WORLDWESTSIRE.COM
25 WINTERPAST LANE, JOLIET, MT 59041

FOLLOW US ON 



COLEMAN ANGUS

YOUR MATERNAL SOURCE



COLEMAN GLACIER 041 – Reg. 19866409
SIRE: SAV Renown 3439 DAM: Coleman Donna 439



COLEMAN ROCK 7200 – REG. 19107936
SIRE: OCC Juneau 807J DAM: Coleman Donna 714



COLEMAN RESOURCE 708 – Reg. 18933681
SIRE: SAV Resource 1441 DAM: Coleman Donna 376



SOUTH AMERICA – Reg. 19919943
SIRE: Don Aparicio Serrucho 57 Maxi DAM: Rubeta Fontana 7567

ANNUAL FEMALE SALE

Tues. October 8, 2024
Held at the Ranch in Charlo, MT
Selling 200 Head!



COLEMAN DONNA 7221 – Reg. 19102656
SIRE: SAV Renown 3439 DAM: Coleman Donna 714



COLEMAN DONNA 787 – Reg. 18838394
SIRE: Coleman Charlo 0256 DAM: Coleman Donna 063



COLEMAN DONNA 8146 – Reg. 19248244
SIRE: Connealy Thunder DAM: Coleman Donna 714



COLEMAN CHLOE 9275 – Reg. 19583423
SIRE: Coleman Bravo 6313 DAM: Lawsons Chloe C815

ANNUAL BULL SALE

Tues. February 18, 2025
New Sale Location TBD
Selling 200 Head!

Coleman Angus
Larry & Dee Coleman Family
Jeremy & Jenny Haag Family
40067 Morris Road
Charlo, Montana 59824

Larry Coleman: 406.240.2751
Jeremy Haag: 406.833.0117
Office: 406.644.2697

colemangus@blackfoot.net